





Simone CORSI

Italian Moto2 rider in MotoGP World Championship.



Rubén XAUS

Retired MotoGP and World Superbike racer.
He's working in Freddie Spencer motorcycle school in Andorra and the MUGENRACE ambassador.



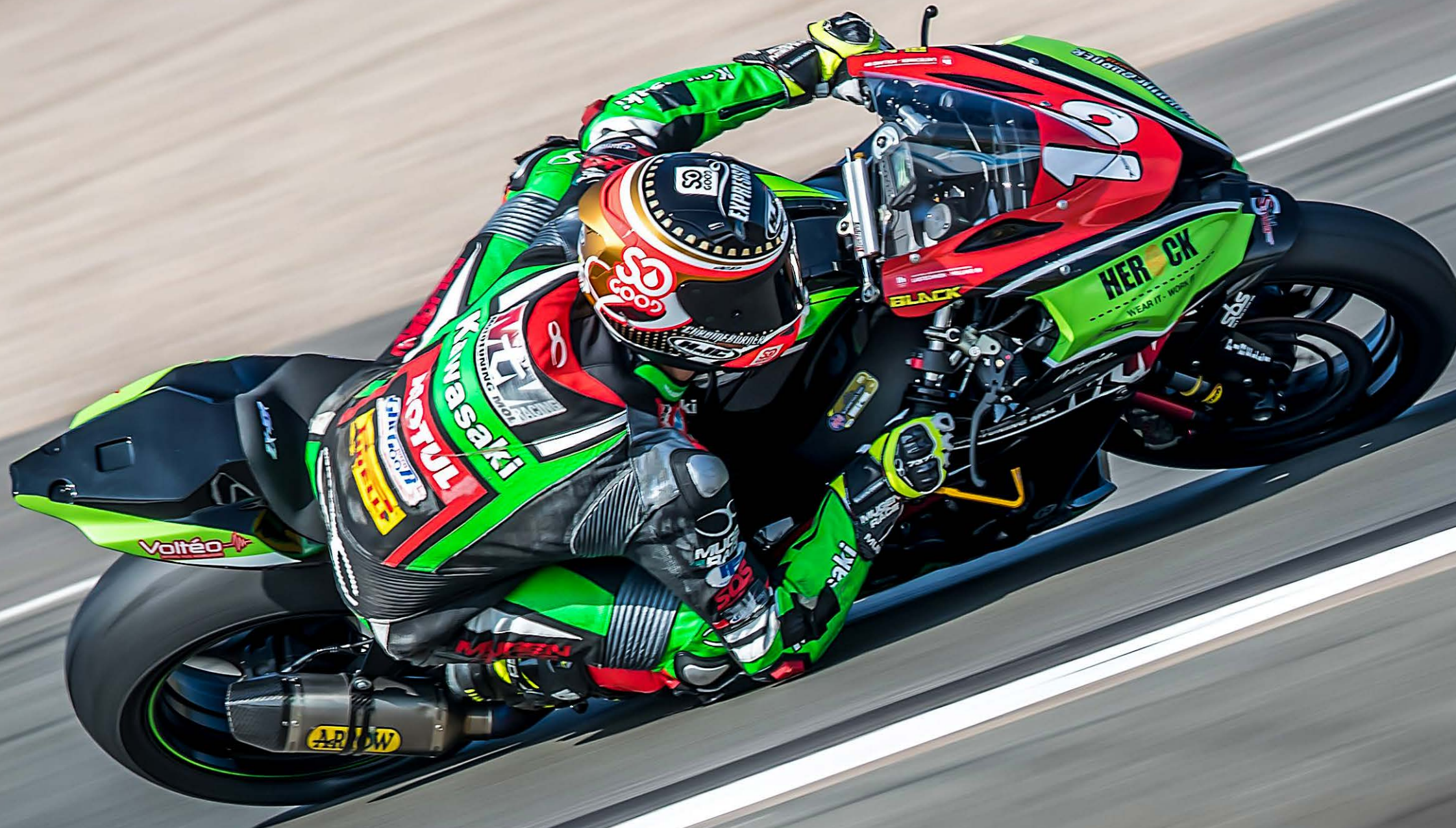
Isaac VINALES

Spanish Moto2 rider in MotoGP World Championship. SAG Team's rider in 2017.
We sponsored the team with team uniform on that year also.



Gregg BLACK

French Superbike Champion and FIM Endurance World Champion 2nd place.
Supported rider from '14 to '16.



FULL SPONSORSHIP WITH SOME MOTOGP TEAMS

The MUGENRACE is support for some motoGP teams with team uniform or racing suit with team uniform package.





ROAD TO INFINITY

Biking is like tasting freedom. Being hugged by the wind, being pulled in the corner and seeing the road running backwards under the wheels are all promising something: somewhere, in the front infinity is waiting. Limitless experience, liberating feeling which you need to experience.

Mugen means infinity in Japanese. In the country of the rising sun - where the experience of biking is jointly provided by manufacturing precision and respect for performance - this word is a known surname. If we wish to define the meaning of the word more precisely, we can say: No limit. Infinity.

The owner of MUGENRACE wanted to share this experience with many people when he founded the company in 2001 selling motorbike wear and accessories. To start with, he was selling products of another manufacturers, but he made sure that the sold equipment went through rigorous testing. He knew very well what to check if it came to motorbike gear. As the introducer of stunt riding and successful racer and biker acrobat known from his stunts all over the world, he had plenty of possibilities to experience the strain the biking gear is exposed to during falls at various speed. During the years he tested several products from several manufacturers, when he finally decided: he was going to develop an individual product under an own brand name. His goal was to develop a product, which provides safe protection combined with excellent quality and reliability, also suitable for the MotoGP racers.

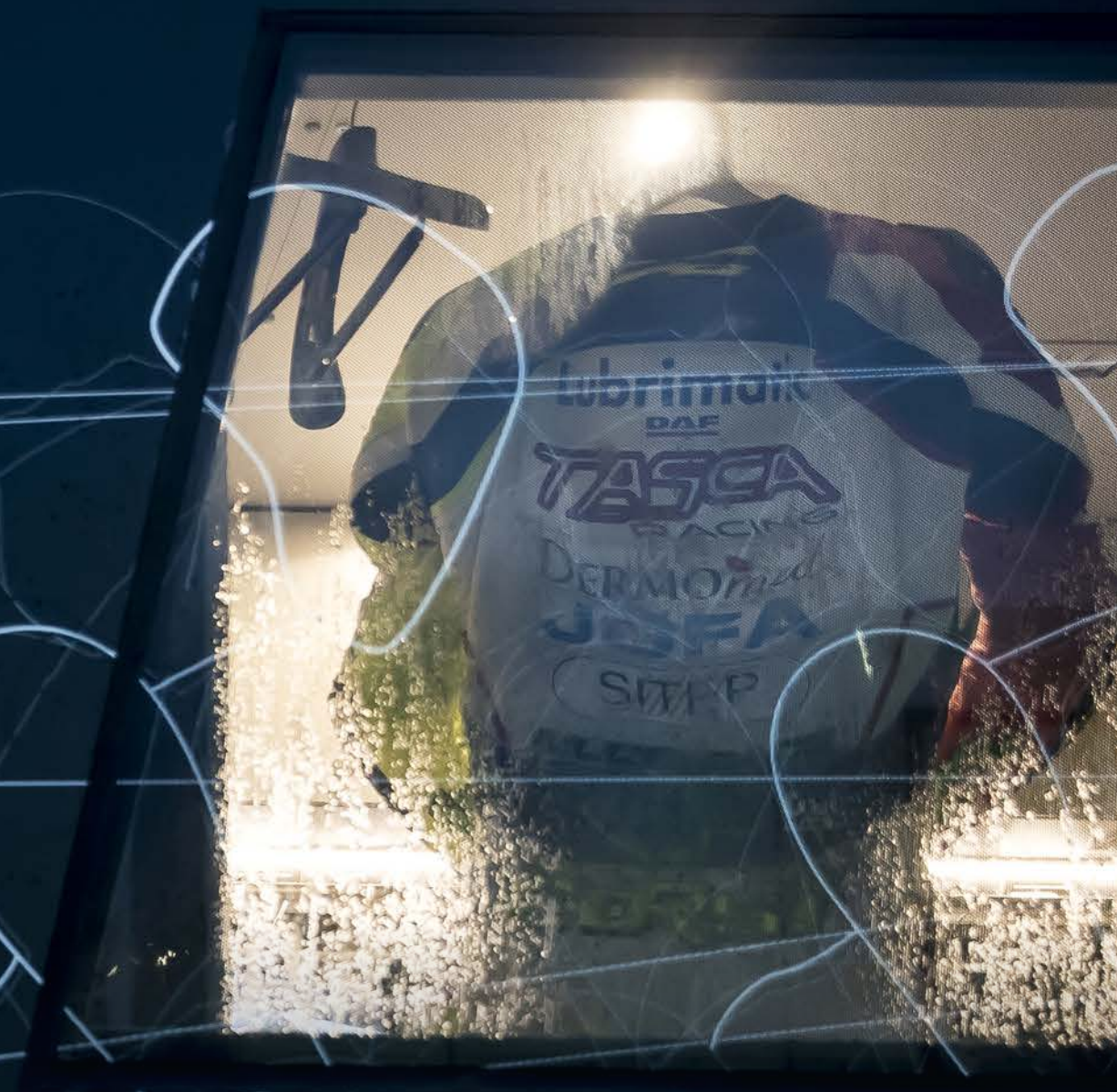


BIKING CLOTHING TEST: CRASHING AT A SPEED OF 200 KM/H!

Product development meant new challenges, but finding the right way took more than eight years. The core product was of course the leather suit, which was manufactured in multiple countries and continents based on continuously improved design. By incorporation of the collected knowledge and experience, the enhanced garments got closer and closer to the expectations, in the meanwhile changes were made to the dress patterns, to the leather material and thickness, the security stitching got stronger and the security elements and protectors finally were put at the right place.

When the new version was ready, the company founder tested the product personally. Due to this, the first sample of every leather suit collection was produced in size 48, personally tailored to the size of the founder, as he done the testing of the product himself.

The evaluation of the sample went surprisingly easy. The owner put the leather suit on, he tried how comfortable the suit was, he checked whether it hindered the user in moving its body or it bent well at the elbows or not, he also checked how comfortable it was in riding position. If all was ok, the second step followed. He put on inline skates and on a quiet main road or airport he was being pulled by a high-performance motorbike. At a speed of 200 km/h or sometimes even faster he let the rope go and he was sliding or rolling in various positions. Then he stood up and checked where the stitches came loose, how worn the leather was and were there any splits on the material.





REFERENCE INJURIES

During testing the sample items were scored higher or lower based on the routine obtained during hundreds of bike crashes. This non-ordinary knowledge is based on the experience of many crashes, involving also several cases with a long-recovery period. The history of crashes includes crashes at minimum speed ending up in coma and a crash with a motorbike with a speed of 300 km/h and ending up with a strained finger. The accidents took place on high-speed race tracks, highways, fields or snow-covered forest tracks while pushing the boundaries, battling time or during the development of acrobatic stunts with the bike. All the learning has been reapplied to the latest development bike wear. Since the media coverage of Sinja Nakano's crash at a speed of over 300 km/h, nobody contests that bike suits manufactured by using technology enabling top quality, provide real protection to the user. In the headquarters of MUGEN-RACE the scratches and scars on the damaged suits of the MotoGP, Moto2 and Moto3 racers prove as a peculiar reference, that the suit even at a high-speed crash protected the user.



AIRBAG IN THE SUIT

Sophisticated development and uncompromising quality requirements finally reached their goal and after conquering Europe, the MUGENRACE biker wear found its customers also outside Europe. The success is proved by the fact that the brand has entered the highest level possible, the world of MotoGP. More and more racers are wearing the company's suits and the representatives of the company are always present at the races. They are there not only as spectators, but they are also collecting feedback and experience during the races and if required they repair or replace the damaged wear. As of 2018 the company as the partner of Dainese supplies the sponsored teams with leather suits, which according to the latest regulations also include built-in airbags.

The MUGENRACE products are not only manufactured for racers, but for everyone who likes to ride a motorbike. The material of the suits can be cow or buffalo leather, upon extra requirements extremely strong and light kangaroo leather. The product range is continuously expanding, besides the leather products corduroy and jeans materials are also used. Jeans was combined with Kevlar lining, protectors and flexible materials to achieve a true motorbike wear.

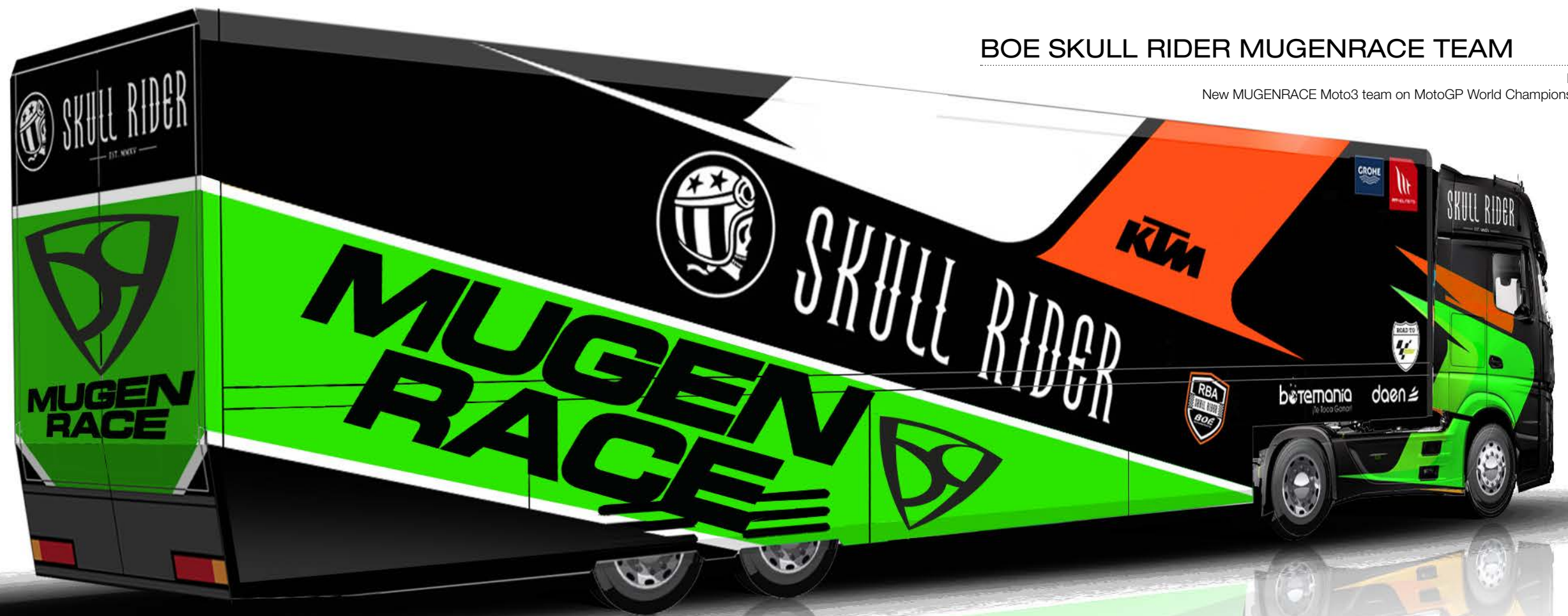
Every item of the range is characterised by the trio of quality, design and safety. The MUGENRACE logo displayed on the suit captures the fundamental experience of biking. In the centre of the trademark the infinity symbol, namely the sideways figure of eight was placed. The character was modified during the design phase, the edges were left open indicating that the MUGENRACE products open up the gates towards infinity. From a mathematical symbol such symbol was created, which symbolises infinity. The message is: the road is open, you just need to get on it and go.

And then: *infinity is awaiting you...*

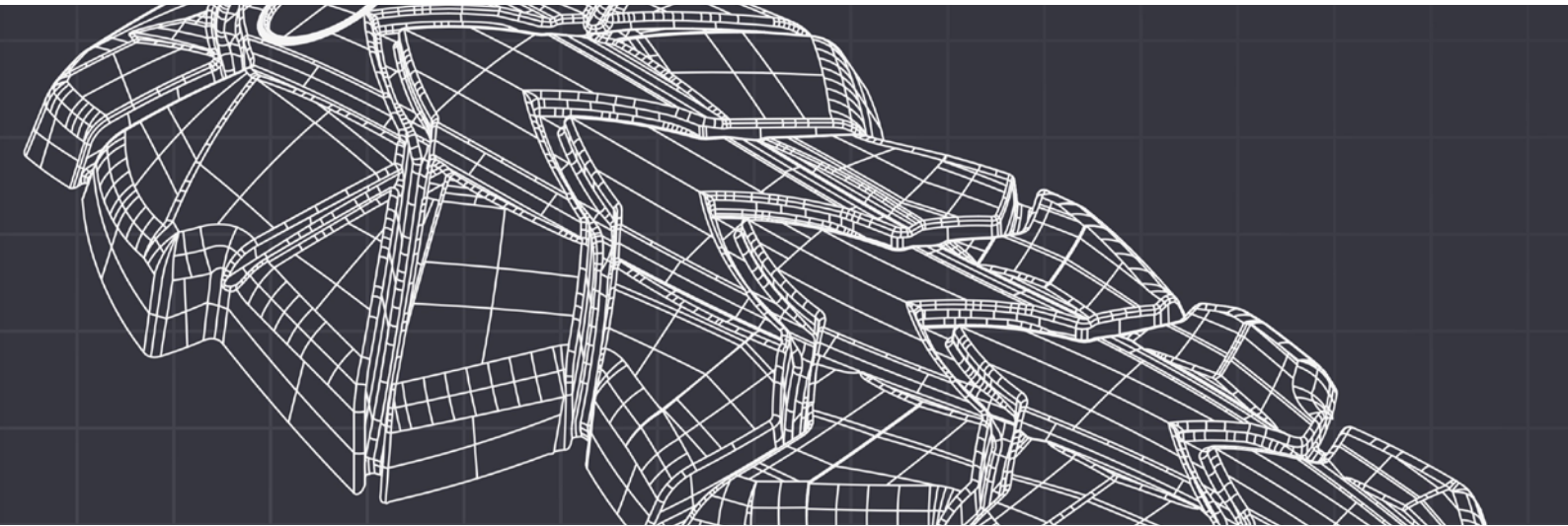
BOE SKULL RIDER MUGENRACE TEAM

betheBEaST

New MUGENRACE Moto3 team on MotoGP World Championship in 2019.



SAFETY INFORMATION



MEANING OF THE CE MARK

The CE mark, applied on each protection device, guarantees the compliance with all the obligations of the producer related to the product in accordance with European Union indication and regulation that require it's application. The compliance with the requirements indicated in the European directives 89/686/CEE (and further modifications), requirements (UE) 2016/425, and to the requirements for technical regulations EN1621-1:2012 have been certified by the Notification Agency:
RICOTEST, ViaTione,9,37010 Pastrengo(VR),Italia(n°0498)
SATRA Ltd, Wyndham Way, Telford Way ind. Estate Kettering, Northamptonshire NN168SD, U.K (n. 0321) SATRA Technology Europe Ltd, Bracetown Business Park, Clonee, Dublin D15 YN2P Ireland (n. 2777)
DOLOMITICERT SCaRL, Z.I. Villanova, 7/A, 32013 Longarone (BL) Italia (n. 2008).

RISKS / PROTECTION LEVELS

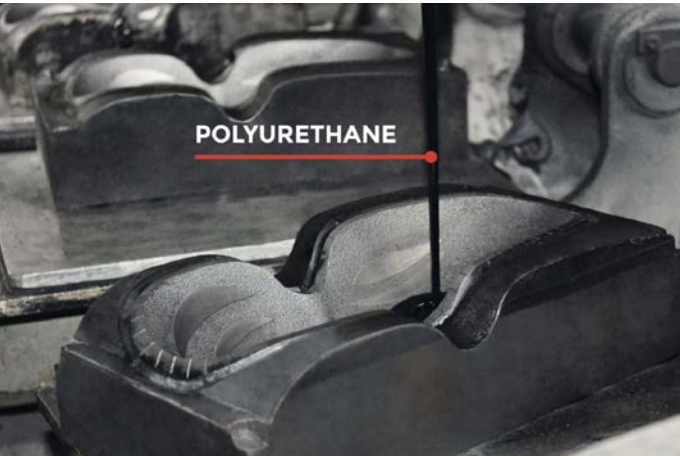
The protection devices offer a LIMITED PROTECTION against IMPACT RISKS due to fall.
The protection is guaranteed only in the case of correct positioning of the protection device in the garment.
NO PROTECTOR CAN OFFERT TOTAL PROTECTION AGAIN ALL TYPES OF COLLISION

RESULT OF TECHNICAL TESTS

The European technical standard of reference, EN1621-1:2012, contemplates that the maximum residual force transmitted by the protector on receiving an energy impact of 50J must not be higher than 35 KN (on average) for level 1 and 20 KN for level 2 (on average). Examinations of the CE Certification have revealed that the protector satisfies the requirements of the reference standard (see the results on table below).
Level 1 provides a good level of protection and comfort.
Level 2 provides maximum safety level but may have a lower level of comfort (ie more weight and/or thickness). At the present state of knowledge our protectors do not contain any harmful substances.
The EU declaration of conformity is available online on the website www.safe-tech.it

INTENDED USE- LIMITS OF USE

The correct use for motorcyclists and cyclists is always linked to adequate support systems (motorcycle clothing). The tests were carried out, as required by the standard EN 1621-1: 2012, at a temperature of (23±2)°C and at a relative humidity of (50±5)% after pre-conditioning in accordance with the mandatory Ambient & Wet, the optional high temperature (40°C) and optional low temperature (-10°C) conditioning requirements specified within the standard EN 1621-1: 2012
Extreme changes of environmental conditions (e.g. extreme temperatures or humidity) can reduce the performance of the protectors. The protection devices have been developed to be used only with specifically designed clothing. Do not use for any other use. Misuse could reduce protection.



THE PROTECTOR ONLY MEETS SAFETY CONDITIONS IF IT IS CORRECTLY FITTED INTO THE GARMENT AND IS IN A PERFECT STATE OF REPAIR.

Safe Tech declines every responsibility for possible damage due to unauthorized changes and/or repairs, as well as the use of protectors in garments not designed for, or incorrectly designed for the lodging of the protector.

The retailer and manufacturer will be absolved of all liability in respect of any personal injury or other claims arising from the use of the products other than are intended, including unauthorised user modifications, actions or exposures

When choosing a limb protector, choose a protector that is of the correct size and is comfortable when adopting your usual riding position.

The user should always check the right direction when inserting the protector into the pocket inside the clothing. This product should not be worn separately or be worn in direct contact with your skin or clothing.

This product should be positioned correctly inside a suitable pocket within the outer garment.

Before each use ensure that the protectors are correctly positioned over the limb joints as instructed by the manufacturer. Incorrectly positioned limbs can result in dangerous riding conditions and the protection offered by these products being significantly reduced.

Warnings! These limb protectors cannot guarantee protection against injuries caused by high-energy impacts, twisting, penetration, bending, or crushing, and cannot prevent fatalities.

STORAGE, MAINTENANCE, CLEANING, DURATION

In order to keep the protections integral and functional it is recommended NOT to expose them to direct sun light or heat sources, store them in a dry and ventilated place and NOT to put weights on them that could deform the devices. In the case the protection devices show deformations or after a crash, they need to be replaced.

For cleaning DO NOT use chemical products, if they get in contact with oils, petrol or other acids or solvents, check carefully and eventually replace. Wipe with a damp cloth.

If the protectors are kept carefully as described above and are not subjected to mechanical impact, they can maintain their characteristics for a long time. Their life also depends on their use and on the consequent wear of the materials, on the climatic situation, etc. Consequently, depending on the work you expect the protectors to do, it is advisable to check their efficiency frequently and replace them if necessary after 5 years.

Avoid release to the environment, but dispose according to the norms in force.

CERTIFICATED PROTECTOR

All the protectors are made with a special polyurethane formula and with high-quality raw materials, all the production phases are managed entirely at Safe Tech, and the products are **approved by European certifying bodies.**

MATERIAL AND TECHNICAL INFORMATION

LEATHER GARMENTS
Leather never goes out of fashion but there is a substantial difference between leather jackets made purely for fashion purposes and those worn primarily for protection. leathers used for protective use are heavier, thicker and inherently safer.

The new leather jackets presented this season combine the best of both worlds. They're good looking pieces constructed of high-quality leather that combine fashion and function.

The original qualities leather possesses is why the fabric has been used for motorcycle gear for many years. Its extremely strong texture makes it difficult to scratch or scuff, which helps keep riders safe. leather will breathe for comfort and ventilate to adjust to the environment. It has natural water-resistant and wind proof properties. leather won't stretch out of shape and gets more beautiful when it ages. And in case of a crash leather doesn't "grab" the road's surface, instead it will slide.

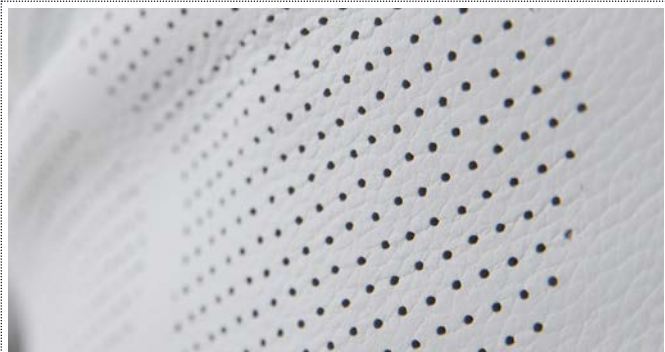
The different types of leather incorporated in the new jackets have been specifically selected for their different cosmetic qualities and physical properties.



Cowhide matte finish leather.



Perforated cowhide matte finish leather material on full surface.



Perforated design on part of full surface.



Neoprene materials for the best comfort at the end of the limbs.



Kevlar® reinforcement on the risky parts.



Longer racing hump on 1pc leather suits.



Flexible leather parts on some necessary area.



Flexible leather parts on some necessary area.

TEXTILE GARMENTS



Double front openings.



Dual layered jackets. Thermolining and waterproof membrain.



High quality zippers.



Coin holder pocket for some jackets.



Removable back panel.



Camel bag options.



Honeycomb airvent system.



Adjustable neck snap.



Flexible textile parts on some necessary area.



Reflective surfaces for higher safety.

LEATHER
SUITS



BRW



BWG

BFYW

Our newest leather suit, developed with the experiences based on MotoGP™. Every suit made of 1.2-1.3 mm premium quality cowhide leather, back and front side are both perforated and it has an excellent ventilation. With the rubberized insertions the suit perfectly fits with the owner's body. All of them get the most modern TPU exterior protectors, with replaceable sliders. On the back there are power abrosber paddings for the bigger safety and for better comfort the neck area made of neoprene material. This leather suit is perfectly suitable for riding on street or on a race track as well.

MATERIALS AND PROTECTIONS

Outer shell	Cowhide leather with matte finish, perforated cow hide matte finish leather, special 4ways MNR-stretch and neoprene.
Lining	100% polyester aero cool 3D mesh removable lining.
Protection	External: Italian made TPU polyurethane protectors are two type of BASF and Bayer with different hardness. Elbow sliders are harder, then shoulder and knees. Internal: SafeTech™ Viscoflex™ PU formula protection with Level-2 (EN1621-1:2012; Type-A) certificate.

ERGONOMIC AND SAFETY CERTIFICATE

Fitting	Racing slim fit
Features	Flexible leather panels at shoulders, back and knees, comfort neoprene collar and cuffs, special 4ways MNR-stretch panels at chest, back, sleeves and legs, removable lining, aero cool 3D mesh at back, safety stitching, safety seams
Safety	LEVEL-2 Safety

AVAILABLE SIZES

Men	44	46	48	50	52	54	56	58	60
-----	----	----	----	----	----	----	----	----	----

AVAILABLE COLORS

BWG	Black / White / Grey
BRW	Black / Red / White
BFYW	Black / Fluorescent-yellow / White



BWLG



BWR

BWFY

Our newest leather suit, developed with the experiences based on MotoGP™. Every suit made of 1.2-1.3 mm premium quality cowhide leather, back and front side are both perforated and it has an excellent ventilation. With the rubberized insertions the suit perfectly fits with the owner's body. All of them get the most modern TPU exterior protectors, with replaceable sliders. On the back there are power abrosber paddings for the bigger safety and for better comfort the neck area made of neoprene material. This leather suit is perfectly suitable for riding on street or on a race track as well.

MATERIALS AND PROTECTIONS

Outer shell	Cowhide leather with matte finish, perforated cow hide matte finish leather, special 4ways MNR-stretch and neoprene.
Lining	100% polyester aero cool 3D mesh removable lining.
Protection	External: Italian made TPU polyurethane protectors are two type of BASF and Bayer with different hardness. Elbow sliders are harder, then shoulder and knees. Internal: SafeTech™ Viscoflex™ PU formula protection with Level-2 (EN1621-1:2012; Type-A) certificate.

ERGONOMIC AND SAFETY CERTIFICATE

Fitting	Racing slim fit
Features	Flexible leather panels at shoulders, back and knees, comfort neoprene collar and cuffs, special 4ways MNR-stretch panels at chest, back, sleeves and legs, removable lining, aero cool 3D mesh at back, safety stitching, safety seams
Safety	LEVEL-2 Safety

AVAILABLE SIZES

Men	44	46	48	50	52	54	56	58	60
-----	----	----	----	----	----	----	----	----	----

AVAILABLE COLORS

BWLG	Black / White / Light-grey
BWR	Black / White / Red
BWFY	Black / White / Fluorescent-yellow



WBFYG



WBRG

WBBLG

New stuff of the Mugenrace leather suits! The brand new 2019 Mugenrace cowhide –kangaroo hybrid one piece leather suit. The biggest part of this suit made of 1.2-1.3 mm premium quality cowhide leather, and almost the 40% of the suit made of kangaroo leather. With this kind of material use this suit will be unique on the market. The TPU exterior protectors on the shoulders, elbows and the knees are the same as the other Mugenrace one piece leather suits.

MATERIALS AND PROTECTIONS

Outer shell	60% Cowhide leather with matte finish and 40% kangaroo leather, perforated cow hide matte finish leather, special 4ways MNR-stretch and neoprene.
Lining	100% polyester aero cool 3D mesh removable lining.
Protection	External: Italian made TPU polyurethane protectors are two type of BASF and Bayer with different hardness. Elbow sliders are harder, then shoulder and knees. Internal: SafeTech™ Viscoflex™ PU formula protection with Level-2 (EN1621-1:2012; Type-A) certificate.

ERGONOMIC AND SAFETY CERTIFICATE

Fitting	Racing slim fit
Features	Flexible leather panels at shoulders, back and knees, comfort neoprene collar and cuffs, special 4ways MNR-stretch panels at chest, back, sleeves and legs, removable lining, aero cool 3D mesh at back, safety stitching, safety seams
Safety	LEVEL-2 Safety

AVAILABLE SIZES

Men	44	46	48	50	52	54	56	58	60
-----	----	----	----	----	----	----	----	----	----

AVAILABLE COLORS

BWG	Black / White / Grey
BWRG	Black / White / Red / Grey
WBFYG	Black / White / Fluorescent-yellow / Grey
WBG	White / Black / Grey
WBRG	White / Black / Red / Grey
WBFYG	White / Black / Fluorescent-yellow / Grey
WBBLG	White / Black / Blue / Grey



BWBL



WBFY

Every suit made of 1.2-1.3 mm premium quality cowhide leather, back and front side are both perforated and it has an excellent ventilation. With rubberized insertions the suit perfectly fits with the owner's body. All of them get the most modern TPU exterior protectors, with replaceable sliders. This leather suit is perfectly suitable for riding on street or on a race track as well.

MATERIALS AND PROTECTIONS

Outer shell	Cowhide leather with matte finish, perforated cow hide matte finish leather, special 4ways MNR-stretch and neoprene.
Lining	100% polyester mesh removable lining.
Protection	External: Italian made TPU polyurethane protectors are two type of BASF and Bayer with different hardness. Elbow sliders are harder, then shoulder and knees. Internal: SafeTech™ Viscoflex™ PU formula protection with Level-2 (EN1621-1:2012; Type-A) certificate.

ERGONOMIC AND SAFETY CERTIFICATE

Fitting	Racing slim fit
Features	Flexible leather panels at shoulders, back and knees, comfort neoprene collar and cuffs, special 4ways MNR-stretch panels at chest, back, sleeves and legs, removable lining, safety stitching, safety seams
Safety	LEVEL-2 Safety

AVAILABLE SIZES

Men	44	46	48	50	52	54	56	58	60
-----	----	----	----	----	----	----	----	----	----

AVAILABLE COLORS

BWG	Black / White / Grey
BWR	Black / White / Red
WBFY	Black / White / Fluorescent-yellow
BWBL	Black / White / Blue



BWG



BWR

BWfy

Every suit made of 1.2-1.3 mm premium quality cowhide leather, back and front side are both perforated and it has an excellent ventilation. With rubberized insertions the suit perfectly fits with the owner's body. All of them get the most modern TPU exterior protectors, with replaceable sliders. This leather suit is perfectly suitable for riding on street or on a race track as well.

MATERIALS AND PROTECTIONS

Outer shell	Cowhide leather with matte finish, perforated cow hide matte finish leather, special 4ways MNR-stretch and neoprene.
Lining	100% polyester mesh removable lining.
Protection	External: Italian made TPU polyurethane protectors are two type of BASF and Bayer with different hardness. Elbow sliders are harder, then shoulder and knees. Internal: SafeTech™ Viscoflex™ PU formula protection with Level-2 (EN1621-1:2012; Type-A) certificate.

ERGONOMIC AND SAFETY CERTIFICATE

Fitting	Racing slim fit
Features	Flexible leather panels at shoulders, back and knees, comfort neoprene collar and cuffs, special 4ways MNR-stretch panels at chest, back, sleeves and legs, removable lining, safety stitching, safety seams
Safety	LEVEL-2 Safety

AVAILABLE SIZES

Men	44	46	48	50	52	54	56	58	60
-----	----	----	----	----	----	----	----	----	----

AVAILABLE COLORS

BWG	Black / White / Grey
BWR	Black / White / Red
BWfy	Black / White / Fluorescent-yellow



BWfy



BWG

BWR

Every suit made of 1.2-1.3 mm premium quality cowhide leather, back and front side are both perforated and it has an excellent ventilation. With rubberized insertions the suit perfectly fits with the owner's body. All of them get the most modern TPU exterior protectors, with replaceable sliders. This leather suit is perfectly suitable for riding on street or on a race track as well.

MATERIALS AND PROTECTIONS

Outer shell	Cowhide leather with matte finish, perforated cow hide matte finish leather, special 4ways MNR-stretch and neoprene.
Lining	100% polyester mesh removable lining.
Protection	External: Italian made TPU polyurethane protectors are two type of BASF and Bayer with different hardness. Elbow sliders are harder, then shoulder and knees. Internal: SafeTech™ Viscoflex™ PU formula protection with Level-2 (EN1621-1:2012; Type-A) certificate.

ERGONOMIC AND SAFETY CERTIFICATE

Fitting	Racing slim fit
Features	Flexible leather panels at shoulders, back and knees, comfort neoprene collar and cuffs, special 4ways MNR-stretch panels at chest, back, sleeves and legs, removable lining, safety stitching, safety seams
Safety	LEVEL-2 Safety

AVAILABLE SIZES

Men	44	46	48	50	52	54	56	58	60
-----	----	----	----	----	----	----	----	----	----

AVAILABLE COLORS

BWG	Black / White / Grey
BWR	Black / White / Red
BWfy	Black / White / Fluorescent-yellow



BWR



BW

BWFY

Every suit made of 1.2-1.3 mm premium quality cowhide leather. On the shoulder,knee and the elbow there are special metal protectors which makes the suit extremely safety. With the rubberized insertions the suit perfectly fits with the owner's body. On the back the aerodynamic properties of the race pin reduce the air resistance. The whole suit is perforated and it has the best ventilation in the biggest heat! This leather suit is perfectly suitable for riding on street or on a race track as well.

MATERIALS AND PROTECTIONS

Outer shell	Cowhide leather with matte finish, perforated cow hide matte finish leather, special 4ways MNR-stretch and neoprene.
Lining	100% polyester mesh removable lining.
Protection	External: Aluminium injection black PU. Internal: SafeTech™ Viscopflex™ PU formula protection with Level-2 (EN1621-1:2012; Type-A) certificate.

ERGONOMIC AND SAFETY CERTIFICATE

Fitting	Racing slim fit
Features	Flexible leather panels at shoulders, back and knees, comfort neoprene collar and cuffs, special 4ways MNR-stretch panels at chest, back, sleeves and legs, removable lining, safety stitching, safety seams
Safety	LEVEL-2 Safety

AVAILABLE SIZES

Men	44	46	48	50	52	54	56	58	60
-----	----	----	----	----	----	----	----	----	----

AVAILABLE COLORS

BW	Black / White
BWR	Black / White / Red
BWFY	Black / White / Fluorescent-yellow



RWB



BW

BW

Ruben is a well known motorcycle racer in the world. He has a lot of World Championship trophys. Race in Suberbike World Championship and in the MotoGP also, that's why this is very important for us he choose the MUGENRACE leather suits and make them popular. Ruben Xaus is the ambassador of the MUGENRACE this means our clothes the best motorcycle clothes in the world.

MATERIALS AND PROTECTIONS

Outer shell	Cowhide leather with matte finish, perforated cow hide matte finish leather, special 4ways MNR-stretch and neoprene.
Lining	100% polyester mesh removable lining.
Protection	External: Italian made TPU polyurethane protectors are two type of BASF and Bayer with different hardness. Elbow sliders are harder, then shoulder and knees. Internal: SafeTech™ Viscopflex™ PU formula protection with Level-2 (EN1621-1:2012; Type-A) certificate.

ERGONOMIC AND SAFETY CERTIFICATE

Fitting	Racing slim fit
Features	Flexible leather panels at shoulders, back and knees, comfort neoprene collar and cuffs, special 4ways MNR-stretch panels at chest, back, sleeves and legs, removable lining, safety stitching, safety seams
Safety	LEVEL-2 Safety

AVAILABLE SIZES

Men	44	46	48	50	52	54	56	58	60
-----	----	----	----	----	----	----	----	----	----

AVAILABLE COLORS

BW	Black / White
RWB	Red / White / Black



BW



BWR

BWYF

This two piece leather suit gonna be perfect for touring, but it has the best atchers of the one piece leather suit it's perfect for riding a sportmotorcycle too. Every suit made of 1.2-1.3 mm premium quality cowhide leather, back and front side are both perforated and it has an exellent ventilation. With rubberized insertions the suit perfectly fits with the owner's body. Our design with the newest trends is unique of the leather suits you can buy on the market.

MATERIALS AND PROTECTIONS

Outer shell	Cowhide leather with matte finish, perforated cow hide matte finish leather, special 4ways MNR-stretch and neoprene.
Lining	100% polyester aero cool 3D mesh removable lining.
Protection	External: Italian made TPU polyurethane protectors are two type of BASF and Bayer with different hardness. Elbow sliders are harder, then shoulder and knees. Internal: SafeTech™ Viscopflex™ PU formula protection with Level-2 (EN1621-1:2012; Type-A) certificate.

ERGONOMIC AND SAFETY CERTIFICATE

Fitting	Street slim fit
Features	Flexible leather panels at shoulders, back and knees, comfort neoprene collar and cuffs, robust connection zipper, special 4ways MNR-stretch panels at chest, back, sleeves and legs, removable lining, aero cool 3D mesh at back, safety stitching, safety seams
Safety	LEVEL-2 Safety

AVAILABLE SIZES

Men	44	46	48	50	52	54	56	58	60
-----	----	----	----	----	----	----	----	----	----

AVAILABLE COLORS

BW	Black / White
BWR	Black / White / Red
BWYF	Black / White / Fluorescent-yellow



BWYF



BW

BR



BWYF

BWR

This two piece leather suit gonna be perfect for touring, but it has the best atchers of the one piece leather suit it's perfect for riding a sportmotorcycle too. Every suit made of 1.2-1.3 mm premium quality cowhide leather, back and front side are both perforated and it has an exellent ventilation. With rubberized insertions the suit perfectly fits with the owner's body. Our design with the newest trends is unique of the leather suits you can buy on the market.

MATERIALS AND PROTECTIONS

Outer shell	Cowhide leather with matte finish, perforated cow hide matte finish leather, special 4ways MNR-stretch and neoprene.
Lining	100% polyester aero cool 3D mesh removable lining.
Protection	External: Italian made TPU polyurethane protectors are two type of BASF and Bayer with different hardness. Elbow sliders are harder, then shoulder and knees. Internal: SafeTech™ Viscopflex™ PU formula protection with Level-2 (EN1621-1:2012; Type-A) certificate.

ERGONOMIC AND SAFETY CERTIFICATE

Fitting	Street slim fit
Features	Flexible leather panels at shoulders, back and knees, comfort neoprene collar and cuffs, robust connection zipper, special 4ways MNR-stretch panels at chest, back, sleeves and legs, removable lining, aero cool 3D mesh at back, safety stitching, safety seams
Safety	LEVEL-2 Safety

AVAILABLE SIZES

Men	44	46	48	50	52	54	56	58	60
-----	----	----	----	----	----	----	----	----	----

AVAILABLE COLORS

BW	Black / White
BR	Black / Red
BWYF	Black / Fluorescent-yellow
BWR	Black / White / Red
BWYF	Black / White / Fluorescent-yellow



BWBL



BWR

BWGY

New stuff of the Mugenrace leather suits!. The brand new 2019 Mugenrace cowhide –kangaroo hybrid two piece leather suit. The biggest part of this suit made of 1.2-1.3 mm premium quality cowhide leather, and almost the 40% of the suit made of kangaroo leather. With this kind of material use this suit will be unique on the market. The TPU exterior protectors on the shoulders, elbows and the knees are the same as the other Mugenrace two piece leather suits.

MATERIALS AND PROTECTIONS

Outer shell	60% Cowhide leather with matte finish and 40% kangaroo leather, perforated cow hide matte finish leather, special 4ways MNR-stretch and neoprene.
Lining	100% polyester aero cool 3D mesh removable lining.
Protection	External: Italian made TPU polyurethane protectors are two type of BASF and Bayer with different hardness. Elbow sliders are harder, then shoulder and knees. Internal: SafeTech™ Viscoflex™ PU formula protection with Level-2 (EN1621-1:2012; Type-A) certificate.

ERGONOMIC AND SAFETY CERTIFICATE

Fitting	Street slim fit
Features	Flexible leather panels at shoulders, back and knees, comfort neoprene collar and cuffs, special 4ways MNR-stretch panels at chest, back, sleeves and legs, removable lining, aero cool 3D mesh at back, robust connection zipper, safety stitching, safety seams
Safety	LEVEL-2 Safety

AVAILABLE SIZES

Men	44	46	48	50	52	54	56	58	60
-----	----	----	----	----	----	----	----	----	----

AVAILABLE COLORS

BW	Black / White
BR	Black / Red
BFY	Black / Fluorescent-yellow
BWG	Black / White / Grey
BWR	Black / White / Red
BWGY	Black / White / Fluorescent-yellow
BWBL	Black / White / Blue



BWGR



BWG

BWGY

This two piece leather suit gonna be perfect for touring, but it has the best atchers of the one piece leather suit it's perfect for riding a sportmotorcycle too. Every suit made of 1.2-1.3 mm premium quality cowhide leather, back and front side are both perforated and it has an excellent ventilation. All of them get the most modern TPU exterior protectors, with replaceable sliders. With the rubberized insertions the suit perfectly fits with the owner's body. Our design with the newest trends is unique of the leather suits you can buy on the market.

MATERIALS AND PROTECTIONS

Outer shell	Cowhide leather with matte finish, perforated cow hide matte finish leather, special 4ways MNR-stretch and neoprene.
Lining	100% polyester mesh removable lining.
Protection	External: Italian made TPU polyurethane protectors are two type of BASF and Bayer with different hardness. Elbow sliders are harder, then shoulder and knees. Internal: SafeTech™ Viscoflex™ PU formula protection with Level-2 (EN1621-1:2012; Type-A) certificate.

ERGONOMIC AND SAFETY CERTIFICATE

Fitting	Street slim fit
Features	Flexible leather panels at shoulders, back and knees, comfort neoprene collar and cuffs, robust connection zipper, special 4ways MNR-stretch panels at chest, back, sleeves and legs, removable lining, aero cool 3D mesh at back, safety stitching, safety seams
Safety	LEVEL-2 Safety

AVAILABLE SIZES

Men	44	46	48	50	52	54	56	58	60
-----	----	----	----	----	----	----	----	----	----

AVAILABLE COLORS

BWG	Black / White
BWGR	Black / White / Grey / Red
BWGY	Black / White / Grey / Fluorescent-yellow



BWG



BWR

BWfy

This two piece leather suit gonna be perfect for touring, but it has the best atchers of the one piece leather suit it's perfect for riding a sportmotorcycle too. Every suit made of 1.2-1.3 mm premium quality cowhide leather, back and front side are both perforated and it has an excellent ventilation. All of them get the most modern TPU exterior protectors, with replaceable sliders. With the rubberized insertions the suit perfectly fits with the owner's body. Our design with the newest trends is unique of the leather suits you can buy on the market.

MATERIALS AND PROTECTIONS

Outer shell	Cowhide leather with matte finish, perforated cow hide matte finish leather, special 4ways MNR-stretch and neoprene.
Lining	100% polyester mesh removable lining.
Protection	External: Italian made TPU polyurethane protectors are two type of BASF and Bayer with different hardness. Elbow sliders are harder, then shoulder and knees are softer. Internal: SafeTech™ Viscopflex™ PU formula protection with Level-2 (EN1621-1:2012; Type-A) certificate.

ERGONOMIC AND SAFETY CERTIFICATE

Fitting	Street slim fit
Features	Flexible leather panels at shoulders, back and knees, comfort neoprene collar and cuffs, robust connection zipper, special 4ways MNR-stretch panels at chest, back, sleeves and legs, removable lining, aero cool 3D mesh at back, safety stitching, safety seams
Safety	LEVEL-2 Safety

AVAILABLE SIZES

Men	44	46	48	50	52	54	56	58	60
-----	----	----	----	----	----	----	----	----	----

AVAILABLE COLORS

BWG	Black / White / Grey
BWR	Black / White / Red
BWfy	Black / White / Fluorescent-yellow



BWfy



BWG

BWR

This two piece leather suit gonna be perfect for touring, but it has the best atchers of the one piece leather suit it's perfect for riding a sportmotorcycle too. Every suit made of 1.2-1.3 mm premium quality cowhide leather, back and front side are both perforated and it has an excellent ventilation. All of them get the most modern TPU exterior protectors, with replaceable sliders. With the rubberized insertions the suit perfectly fits with the owner's body. Our design with the newest trends is unique of the leather suits you can buy on the market.

MATERIALS AND PROTECTIONS

Outer shell	Cowhide leather with matte finish, perforated cow hide matte finish leather, special 4ways MNR-stretch and neoprene.
Lining	100% polyester mesh removable lining.
Protection	External: Italian made TPU polyurethane protectors are two type of BASF and Bayer with different hardness. Elbow sliders are harder, then shoulder and knees. Internal: SafeTech™ Viscopflex™ PU formula protection with Level-2 (EN1621-1:2012; Type-A) certificate.

ERGONOMIC AND SAFETY CERTIFICATE

Fitting	Street slim fit
Features	Flexible leather panels at shoulders, back and knees, comfort neoprene collar and cuffs, robust connection zipper, special 4ways MNR-stretch panels at chest, back, sleeves and legs, removable lining, aero cool 3D mesh at back, safety stitching, safety seams
Safety	LEVEL-2 Safety

AVAILABLE SIZES

Men	44	46	48	50	52	54	56	58	60
-----	----	----	----	----	----	----	----	----	----

AVAILABLE COLORS

BWG	Black / White / Grey
BWR	Black / White / Red
BWfy	Black / White / Fluorescent-yellow



BW FY



BW

BWR

Every suit made of 1.2-1.3 mm premium quality cowhide leather.
The whole suit is perforated and it has the best ventilation in the biggest heat!
On the shoulder, knee and the elbow there are special metal protectors which make the suit extremely safety. With the rubberized insertions the suit perfectly fits with the owner's body.
Our design with the newest trends makes this suit unique of the leather suits you can buy on the market.

MATERIALS AND PROTECTIONS

Outer shell	Cowhide leather with matte finish, perforated cow hide matte finish leather, special 4ways MNR-stretch and neoprene.
Lining	100% polyester mesh removable lining.
Protection	External: Aluminium injection black PU. Internal: SafeTech™ Viscoflex™ PU formula protection with Level-2 (EN1621-1:2012; Type-A) certificate.

ERGONOMIC AND SAFETY CERTIFICATE

Fitting	Street slim fit
Features	Flexible leather panels at shoulders, back and knees, comfort neoprene collar and cuffs, special 4ways MNR-stretch panels at chest, back, sleeves and legs, removable lining, safety stitching, safety seams
Safety	LEVEL-2 Safety

AVAILABLE SIZES

Men	44	46	48	50	52	54	56	58	60
Women	36	38	40	42	44	46	48	50	52

AVAILABLE COLORS

BW	Black / White
BWR	Black / White / Red
BW FY	Black / White / Fluorescent-yellow

Simone CORSI

Fight for the best time...



LEATHER
JACKETS



FYBW



BW

BWR



BFY

Sporty leather jacket which got the newest developments as the one piece leather suit. With the rubberized insertions the suit perfectly fits with the owner's body. The jacket made of 1.2-1.3 premium quality highly durable cowhide leather. The TPU protectors and the power absorber insertions on the front and the back area are maximize the protection and safety. The neck area made of neoprene which makes the jacket really comfortable.

MATERIALS AND PROTECTIONS

Outer shell	Leather parts are cowhide matte finish, special 4ways MNR-stretch and neoprene.
Lining	100% polyester aero cool 3D mesh removable lining.
Protection	External: Italian made TPU polyurethane protectors are two type of BASF and Bayer with different hardness. Internal: SafeTech™ Viscoflex™ PU formula protection with Level-2 (EN1621-1:2012; Type-A) certificate.

ERGONOMIC AND SAFETY CERTIFICATE

Fitting	Regular fit
Features	Flexible leather panels at shoulders, back and elbows, comfort neoprene collar, robust connection zipper, special 4ways MNR-stretch panels at chest and sleeves, velcro fastener adjust at waist, removable lining, safety seams.
Pockets	Two pockets on front, one pocket inside,
Safety	LEVEL-2 Safety

AVAILABLE SIZES

Men	44	46	48	50	52	54	56	58	60
-----	----	----	----	----	----	----	----	----	----

AVAILABLE COLORS

BW	Black / White
BR	Black / Red
BFY	Black / Fluorescent-yellow
FYBW	Fluorescent-yellow / Black / White



BRW



BW

BFYW

Sporty leather jacket which got the newest developments as the one piece leather suit. With the rubberized insertions the suit perfectly fits with the owner's body. The jacket made of 1.2-1.3 premium quality highly durable cowhide leather. The TPU protectors and the power absorber insertions on the front and the back area are maximize the protection and safety. The neck area made of neoprene which makes the jacket really comfortable.

MATERIALS AND PROTECTIONS

Outer shell	Leather parts are cowhide matte finish, perforated cowhide matte finish leather parts, special 4ways MNR-stretch and neoprene.
Lining	100% polyester aero cool 3D mesh removable lining.
Protection	External: Italian made TPU polyurethane protectors are two type of BASF and Bayer with different hardness. Internal: SafeTech™ Viscoflex™ PU formula protection with Level-2 (EN1621-1:2012; Type-A) certificate.

ERGONOMIC AND SAFETY CERTIFICATE

Fitting	Regular fit
Features	Flexible leather panels at shoulders, back and elbows, comfort neoprene collar, robust connection zipper, special 4ways MNR-stretch panels at chest and sleeves, velcro fastener adjust at waist, removable lining, safety seams.
Pockets	Two pockets on front, one pocket inside,
Safety	LEVEL-2 Safety

AVAILABLE SIZES

Men	44	46	48	50	52	54	56	58	60
-----	----	----	----	----	----	----	----	----	----

AVAILABLE COLORS

BW	Black / White
BRW	Black / Red/ White
BFYW	Black / Fluorescent-yellow / White



BWG



BWB

BWFY

Sporty leather jacket which got the newest developements as the one piece leather suit. The jacket made of 1.2-1.3 premium quality highly durable cowhide leather. The neck area made of neoprene which makes the jacket really comfortable.

MATERIALS AND PROTECTIONS

Outer shell	Leather parts are cowhide matte finish, special 4ways MNR-stretch and neoprene.
Lining	100% polyester aero cool 3D mesh removable lining.
Protection	Internal: SafeTech™ Viscoflex™ PU formula protection with Level-2 (EN1621-1:2012; Type-A) certificate.

ERGONOMIC AND SAFETY CERTIFICATE

Fitting	Regular fit
Features	Comfort neoprene collar, robust connection zipper, special 4ways MNR-stretch panels at chest and sleeves, snap adjust at waist, velcro fastener adjust at waist, removable lining, safety seams.
Pockets	Two pockets on front, one pocket inside,
Safety	LEVEL-2 Safety

AVAILABLE SIZES

Men	44	46	48	50	52	54	56	58	60
-----	----	----	----	----	----	----	----	----	----

AVAILABLE COLORS

BWG	Black / White / Grey
BWB	Black / White / Red
BWFY	Black / White / Fluorescent-yellow

WBFY



BW

BWR



BWFY

WBR

Real sporty leather jacket which made of 1.0-1.2 premium quality highly durable cowhide leather. Both sides of the jacket and the back of the shoulder area got rubberized insertions that's why the jacket perfectly fits with the owner's upper body. The chest, the back and the sleeves are perforated so it's got a perfect ventilation. With the removable thermo lining this jacket is perfect in cold weather too. On the shoulders there are metal protectors for bigger safety. The back has a small race hump which makes the jacket looks like a two piece leather suit.

MATERIALS AND PROTECTIONS

Outer shell	Leather parts are cowhide matte finish, perforated cowhide matte finish leather parts, special 4ways MNR-stretch and neoprene.
Lining	100% polyester mesh removable lining.
Protection	External: Aluminium injection black PU. Internal: SafeTech™ Viscoflex™ PU formula protection with Level-2 (EN1621-1:2012; Type-A) certificate.

ERGONOMIC AND SAFETY CERTIFICATE

Fitting	Regular fit
Features	Flexible leather panels at shoulders, back and elbows, comfort neoprene collar, robust connection zipper, special 4ways MNR-stretch panels at chest and sleeves, velcro fastener adjust at waist, removable lining, safety seams.
Pockets	Two pockets on front, one pocket inside,
Safety	LEVEL-2 Safety

AVAILABLE SIZES

Men	44	46	48	50	52	54	56	58	60
-----	----	----	----	----	----	----	----	----	----

AVAILABLE COLORS

BW	Black / White
BWR	Black / White / Red
BWFY	Black / White / Fluorescent-yellow
WBR	White / Black / Red
WBFY	White / Black / Fluorescent-yellow



BWR



BW

BWYF

This jacket made of 1.0-1.2 mm premium quality highly durable cowhide leather. It has maximized safety with exterior metal protectors on the shoulders and power abrosber insertions on the chest, back area and around the keycone. The front of the jacket is fully perforated so it's got a perfect ventilation. With the removable thermo lining this jacket is perfect in cold weather too. The rubberized insertions on the waist and shoulder has improved range of movement in various riding positions.

MATERIALS AND PROTECTIONS

Outer shell	Leather parts are cow hidematte finish, perforated cowhide matte finish leather parts, special 4ways MNR-stretch and neoprene.
Lining	100% polyester mesh removable lining.
Protection	External: Aluminium injection black PU. Internal: SafeTech™ Viscoflex™ PU formula protection with Level-2 (EN1621-1:2012; Type-A) certificate.

ERGONOMIC AND SAFETY CERTIFICATE

Fitting	Regular fit
Features	Flexible leather panels at shoulders, back and elbows, comfort neoprene collar, robust connection zipper, special 4ways MNR-stretch panels at chest and sleeves, velcro fastener adjust at waist, removable lining, safety seams.
Pockets	Two pockets on front, one pocket inside,
Safety	LEVEL-2 Safety

AVAILABLE SIZES

Men	44	46	48	50	52	54	56	58	60
-----	----	----	----	----	----	----	----	----	----

AVAILABLE COLORS

BWG	Black / White / Grey
BWR	Black / White / Red
BWYF	Black / White / Fluorescent-yellow

BWBL



BWG

BWR



BWYF

Fully perforated leather jacket with race pin on the back. Made of 1.0-1.2 mm premium quality highly durable cowhide leather. With the rubberized insertions on the shoulder and the sides of the jacket it's really comfortable to wear. The exterior metal protectors makes this jacket extremely safety. With the removable thermo lining this jacket is perfect in cold weather too.

MATERIALS AND PROTECTIONS

Outer shell	Leather parts are cowhide matte finish, perforated cowhide matte finish leather parts, special 4ways MNR-stretch and neoprene.
Lining	100% polyester mesh removable lining.
Protection	External: Aluminium injection black PU. Internal: SafeTech™ Viscoflex™ PU formula protection with Level-2 (EN1621-1:2012; Type-A) certificate.

ERGONOMIC AND SAFETY CERTIFICATE

Fitting	Regular fit
Features	Flexible leather panels at shoulders, back and elbows, comfort neoprene collar, robust connection zipper, special 4ways MNR-stretch panels at chest and sleeves, velcro fastener adjust at waist, removable lining, safety seams.
Pockets	Two pockets on front, one pocket inside,
Safety	LEVEL-2 Safety

AVAILABLE SIZES

Men	44	46	48	50	52	54	56	58	60
-----	----	----	----	----	----	----	----	----	----

AVAILABLE COLORS

BWG	Black / White / Grey
BWR	Black / White / Red
BWYF	Black / White / Fluorescent-yellow
BWBL	Black / White / Blue



WBR



BWR

BWFY

It's a really sporty jacket which is made of premium quality cowhide leather. On the sides of the jacket has the same rubberized parts like the Mugenrace one piece race leather suits. The aerodynamic race hump on the back makes the jacket look like a race suit. We got the jacket fully perforated so it has a perfect ventilation, but with the removable lining it's perfect in cold weather too.

MATERIALS AND PROTECTIONS

Outer shell	Leather parts are cowhide matte finish, perforated cowhide matte finish leather zones, special 4ways MNR-stretch and neoprene.
Lining	100% polyester mesh lining.
Protection	External: Aluminium injection black PU. Internal: SafeTech™ Viscopflex™ PU formula protection with Level-2 (EN1621-1:2012; Type-A) certificate.

ERGONOMIC AND SAFETY CERTIFICATE

Fitting	Regular fit
Features	Flexible leather panels at shoulders, back and elbows, comfort neoprene collar, robust connection zipper, special 4ways MNR-stretch panels at chest and sleeves, velcro fastener adjust at waist, removable lining, safety seams.
Pockets	Two pockets on front, one pocket inside,
Safety	LEVEL-2 Safety

AVAILABLE SIZES

Men	44	46	48	50	52	54	56	58	60
-----	----	----	----	----	----	----	----	----	----

AVAILABLE COLORS

WBR	White / Black / Red
BWR	Black / White / Red
BWFY	Black / White / Fluorescent-yellow

BFY

This jacket can be perfect at everyday use or for touring also. Made of premium quality cowhide leather. Around the waist line with a velcro fastener and on the sleeves with snap can be shorten. The jacket is perforated on the shoulders so it has a good ventilation, but with the removable lining it's perfect in cold weather too.

MATERIALS AND PROTECTIONS

Outer shell	Leather parts are cowhide matte finish, special 4ways MNR-stretch and neoprene.
Lining	100% polyester mesh lining.
Protection	Internal: SafeTech™ Viscopflex™ PU formula protection with Level-2 (EN1621-1:2012; Type-A) certificate.

ERGONOMIC AND SAFETY CERTIFICATE

Fitting	Regular fit
Features	Flexible leather panels at shoulders, comfort neoprene collar, robust connection zipper, special 4ways MNR-stretch panels at chest, back, sleeves, velcro fastener adjust at waist, removable lining, safety stitching, safety seams.
Pockets	Two pockets on front, one pocket inside,
Safety	LEVEL-2 Safety

AVAILABLE SIZES

Men	44	46	48	50	52	54	56	58	60
-----	----	----	----	----	----	----	----	----	----

AVAILABLE COLORS

BFY	Black / Fluorescent-yellow
-----	----------------------------



BWFFY

Modern style leather jacket developed for everyday use made of 1.0-1.2 premium quality cowhide leather. The jacket is perforated on the shoulders so it has a good ventilation, but with the removable lining it's perfect from the early spring until the end of autumn.

MATERIALS AND PROTECTIONS

Outer shell	Leather parts are cow hide matte finish, special 4ways MNR-stretch and neoprene.
Lining	100% polyester mesh lining.
Protection	Internal: SafeTech™ Viscoflex™ PU formula protection with Level-2 (EN1621-1:2012; Type-A) certificate.

ERGONOMIC AND SAFETY CERTIFICATE

Fitting	Regular fit
Features	Flexible leather panels at shoulders, comfort neoprene collar, robust connection zipper, special 4ways MNR-stretch panels at chest, back, sleeves, velcro fastener adjust at waist, removable lining, safety seams.
Pockets	Two pockets on front, one pocket inside,
Safety	LEVEL-2 Safety

AVAILABLE SIZES

Men	44	46	48	50	52	54	56	58	60
-----	----	----	----	----	----	----	----	----	----

AVAILABLE COLORS

BWFFY	Black / White / Fluorescent-yellow
-------	------------------------------------





BO



B

Simple leather jacket with interior CE protectors inside for the safety. The comfortable neck area can be fix with a snap. It has a removable thermal lining which make the jacket comfortable in the cold weathers too. The cuff and waistline can be shorten with snaps. This jacket style is a good choice for every motor-cycle type.

MATERIALS AND PROTECTIONS

Outer shell	Leather parts are cowhide.
Lining	100% polyester lining.
Protection	Internal: SafeTech™ Viscoplex™ PU formula protection with Level-2 (EN1621-1:2012; Type-A) certificate.

ERGONOMIC AND SAFETY CERTIFICATE

Fitting	Regular classic fit
Features	Robust connection zipper, safety seams.
Pockets	Four pockets on front, one pocket inside,
Safety	LEVEL-2 Safety

AVAILABLE SIZES

Men	44	46	48	50	52	54	56	58	60
-----	----	----	----	----	----	----	----	----	----

AVAILABLE COLORS

B	Black
BO	Brown



B

Simple leather jacket with interior CE protectors inside for the safety. The comfortable neck area can be fix with a snap. It has a removable thermal lining which make the jacket comfortable in the cold weathers too. The cuff and waistline can be shorten with snaps. This jacket style is a good choice for every motor-cycle type.

MATERIALS AND PROTECTIONS

Outer shell	Leather parts are cowhide.
Lining	100% polyester lining.
Protection	Internal: SafeTech™ Viscoplex™ PU formula protection with Level-2 (EN1621-1:2012; Type-A) certificate.

ERGONOMIC AND SAFETY CERTIFICATE

Fitting	Regular classic fit. Perfecto style.
Features	Robust connection zipper, safety seams.
Pockets	Three pockets on front, one pocket inside,
Safety	LEVEL-2 Safety

AVAILABLE SIZES

Men	44	46	48	50	52	54	56	58	60
-----	----	----	----	----	----	----	----	----	----

AVAILABLE COLORS

B	Black
BO	Brown



B

This leather jacket made of really fine cowhide leather. It's a real Cafe Racer style jacket! The removable lining's color is similar as the leather the jacket made of. Perforated to get the comfort feel in hot weather. It has protectors in the back, the elbow and shoulders for maximum safety.

MATERIALS AND PROTECTIONS

Outer shell	Leather parts are cowhide.
Lining	100% polyester mesh lining with detachable thermo-lining.
Protection	Internal: SafeTech™ Viscoflex™ PU formula protection with Level-2 (EN1621-1:2012; Type-A) certificate.

ERGONOMIC AND SAFETY CERTIFICATE

Fitting	Regular classic fit. Cafe racer style.
Features	Robust connection zipper, removable lining, safety seams.
Pockets	Two pockets on front, one pocket inside,
Safety	LEVEL-2 Safety

AVAILABLE SIZES

Men	44	46	48	50	52	54	56	58	60
-----	----	----	----	----	----	----	----	----	----

AVAILABLE COLORS

B	Black
---	-------

B

This leather jacket made of really fine cowhide leather. It's a real Cafe Racer style jacket! In this jacket a women will feeling strong and stylish. The removable lining's color is similar as the leather the jacket made of. Perforated to feel more comfortable in hot weather. It has protectors in the back, the elbow and shoulders for maximum safety.

MATERIALS AND PROTECTIONS

Outer shell	Leather parts are cowhide.
Lining	100% polyester mesh lining with detachable thermo-lining.
Protection	Internal: SafeTech™ Viscoflex™ PU formula protection with Level-2 (EN1621-1:2012; Type-A) certificate.

ERGONOMIC AND SAFETY CERTIFICATE

Fitting	Regular classic fit. Cafe racer style.
Features	Robust connection zipper, removable lining, safety seams.
Pockets	Two pockets on front, one pocket inside,
Safety	LEVEL-2 Safety

AVAILABLE SIZES

Women	44	46	48	50	52	54	56	58	60
-------	----	----	----	----	----	----	----	----	----

AVAILABLE COLORS

B	Black
---	-------



B

Clean lines leather jacket in a real Cafe Racer style! For the maximum safety the jacket get CE protectors and the waistline and the elbow area get strenghten parts. With the removable thermo lining this jacket is perfect in cold weather too.

MATERIALS AND PROTECTIONS

Outer shell	Leather parts are cowhide.
Lining	100% polyester mesh lining with detachable thermo-lining.
Protection	Internal: SafeTech™ Viscopflex™ PU formula protection with Level-2 (EN1621-1:2012; Type-A) certificate.

ERGONOMIC AND SAFETY CERTIFICATE

Fitting	Regular classic fit. Cafe racer style.
Features	Robust connection zipper, removable lining, safety seams.
Pockets	Four pockets on front, one pocket inside,
Safety	LEVEL-2 Safety

AVAILABLE SIZES

Men	44	46	48	50	52	54	56	58	60
-----	----	----	----	----	----	----	----	----	----

AVAILABLE COLORS

B	Black
---	-------

B

Quilted Leather Jacket for mens with removable thermo lining. The elbow, the shoulder and the waist line has a double strenghten for bigger safety. Inside the jacket has CE protectors. At the end of the sleeves and around the waist can be shorten with snaps.

MATERIALS AND PROTECTIONS

Outer shell	Leather parts are cowhide.
Lining	100% polyester mesh lining with detachable thermo-lining.
Protection	Internal: SafeTech™ Viscopflex™ PU formula protection with Level-2 (EN1621-1:2012; Type-A) certificate.

ERGONOMIC AND SAFETY CERTIFICATE

Fitting	Regular classic fit. Cafe racer style.
Features	Robust connection zipper, removable lining, safety seams.
Pockets	Two pockets on front, one pocket inside,
Safety	LEVEL-2 Safety

AVAILABLE SIZES

Men	44	46	48	50	52	54	56	58	60
-----	----	----	----	----	----	----	----	----	----

AVAILABLE COLORS

B	Black
---	-------



BBER

Leather jacket which is perforated on the chest, back and on the sleeves. Inside the jacket there are CE protectors and they are removable as the lining. This stylish leather jacket can be shorten around the waistline with snaps.

MATERIALS AND PROTECTIONS

Outer shell	Leather parts are cowhide.
Lining	100% polyester mesh lining with detachable thermo-lining.
Protection	Internal: SafeTech™ Viscopflex™ PU formula protection with Level-2 (EN1621-1:2012; Type-A) certificate.

ERGONOMIC AND SAFETY CERTIFICATE

Fitting	Regular classic fit. Cafe racer style.
Features	Robust connection zipper, removable lining, safety seams.
Pockets	Two pockets on front, one pocket inside,
Safety	LEVEL-2 Safety

AVAILABLE SIZES

Men	44	46	48	50	52	54	56	58	60
-----	----	----	----	----	----	----	----	----	----

AVAILABLE COLORS

BBER	Black / Beige / Red
------	---------------------



B

Quilted leather jacket for women with removable lining. The shoulder, elbow and the waist area got double strenghten for maximum safety. Inside the jacket there are CE protectors. Around the waist and the end of the sleeves can be shorten with snaps.

MATERIALS AND PROTECTIONS

Outer shell	Leather parts are cowhide.
Lining	100% polyester mesh lining with detachable thermo-lining.
Protection	Internal: SafeTech™ Viscopflex™ PU formula protection with Level-2 (EN1621-1:2012; Type-A) certificate.

ERGONOMIC AND SAFETY CERTIFICATE

Fitting	Regular classic fit. Cafe racer style.
Features	Robust connection zipper, removable lining, safety seams.
Pockets	Three pockets on front, one pocket inside,
Safety	LEVEL-2 Safety

AVAILABLE SIZES

Women	44	46	48	50	52	54	56	58	60
-------	----	----	----	----	----	----	----	----	----

AVAILABLE COLORS

B	Black
---	-------



B

Clean lines leather jacket in a real Cafe Racer style! For the maximum safety the jacket get CE protectors and the waistline and the elbow area get strenghten parts. With the removable thermo lining this jacket is perfect in cold weather too.

MATERIALS AND PROTECTIONS

Outer shell	Leather parts are cowhide.
Lining	100% polyester mesh lining with detachable thermo-lining.
Protection	Internal: SafeTech™ Viscopflex™ PU formula protection with Level-2 (EN1621-1:2012; Type-A) certificate.

ERGONOMIC AND SAFETY CERTIFICATE

Fitting	Regular classic fit. Cafe racer style.
Features	Robust connection zipper, removable lining, safety seams.
Pockets	Four pockets on front, one pocket inside,
Safety	LEVEL-2 Safety

AVAILABLE SIZES

Men	44	46	48	50	52	54	56	58	60
-----	----	----	----	----	----	----	----	----	----

AVAILABLE COLORS

B	Black
---	-------

Simone CORSI

Concentration



LEATHER
TROUSERS



BW FY



BWR

Sporty leather pants made of 1.2-1.3 premium quality cowhide leather. It has TPU exterior protectors on the knees but there is space for sliders around the knee area which makes this pant suitable for riding a motorcycle sporty way. The comfort feeling gonna be higher with the rubberized insertions. With the connection zipper it can be pair with MUGENRACE leather jackets like a two piece leather suit. On the waist with a velcro fastener you can narrow the waist line.

MATERIALS AND PROTECTIONS

Outer shell	Leather parts are cowhide matte finish, special 4ways MNR-stretch and neoprene.
Lining	100% polyester mesh lining.
Protection	External: Italian made TPU polyurethane protectors are two type of BASF and Bayer with different hardness. Internal: SafeTech™ Viscoflex™ PU formula protection with Level-2 (EN1621-1:2012; Type-A) certificate. Knee sliders.

ERGONOMIC AND SAFETY CERTIFICATE

Fitting	Regular fit with three different lengths.
Features	Flexible leather panels at knees and legs and waist.
Safety	LEVEL-2 Safety

AVAILABLE SIZES

Available in three different lengths. Short, standard and long.

Men	46	48	50	52	54	56	58	60	62
-----	----	----	----	----	----	----	----	----	----

AVAILABLE COLORS

B	Black
BW	Black / White
BWR	Black / White / Red
BW FY	Black / White / Fluorescent-yellow



B

Leather pants made of 1.2-1.3 premium quality cowhide leather. The comfort feeling gonna be higher with the rubberized insertions. With the connection zipper it can be pair with MUGENRACE leather jackets like a two piece leather suit. On the waist with a velcro fastener you can narrow the waist line.

MATERIALS AND PROTECTIONS

Outer shell	Leather parts are cowhide matte finish, special 4ways MNR-stretch and neoprene.
Lining	100% polyester mesh lining.
Protection	Internal: SafeTech™ Viscoflex™ PU formula protection with Level-2 (EN1621-1:2012; Type-A) certificate.

ERGONOMIC AND SAFETY CERTIFICATE

Fitting	Regular fit with three different lengths.
Features	Flexible leather panels at knees and legs and waist.
Safety	LEVEL-2 Safety

AVAILABLE SIZES

Available in three different lengths. Short, standard and long.

Men	46	48	50	52	54	56	58	60	62
-----	----	----	----	----	----	----	----	----	----

AVAILABLE COLORS

B	Black
---	-------

TEXTILE
JACKETS



BLGR



BW

BR



BFY

BLGW



BLGFY

This jacket made for maximum comfort in the hottest weather especially for riding through the whole summer. The removable thermo lining and the waterproof membrane will help the owner to feel comfortable in cold and rainy weather. On the sleeves and around the waist can be fix to the owner's body with velcro fasteners.

MATERIALS AND PROTECTIONS

Outer shell Nylon mesh and polyester 600D composite and neoprene.
Lining 100% polyester with removable thermal lining, waterproof membrane.
Protection Internal: SafeTech™ Viscoflex™ PU formula protection with Level-2 (EN1621-1:2012; Type-A) certificate.

ERGONOMIC AND SAFETY CERTIFICATE

Fitting Regular fit
Features Summer wear, foam protector on back, velcro fasteners on sleeves and waist.
Pockets Two pockets on front, two pockets inside, cellular phone pocket inside.
Safety LEVEL-2 Safety

AVAILABLE SIZES

Men	XS	S	M	L	XL	2XL	3XL	4XL	5XL
-----	----	---	---	---	----	-----	-----	-----	-----

AVAILABLE COLORS

BW Black / White
BR Black / Red
BFY Black / Fluorescent-yellow
BLGW Black / Light-grey / White
BLGR Black / Light-grey / Red
BLGFY Black / Light-grey / Fluorescent-yellow



BFY



B

BLGR



BCA

This Jacket is developed for really hot weather especially for the summer. It has a perfect ventilation, but it's suitable in cold weather with the removable lining and membrane for wind and waterproofing with high level of breathability. On the sleeves and around the waist can be shorten with velcro fasteners.

MATERIALS AND PROTECTIONS

Outer shell Nylon mesh and polyester 600D composite and neoprene.
Lining 100% polyester with removable thermal lining, waterproof membrane.
Protection Internal: SafeTech™ Viscoflex™ PU formula protection with Level-2 (EN1621-1:2012; Type-A) certificate.

ERGONOMIC AND SAFETY CERTIFICATE

Fitting Regular fit
Features Summer wear, foam protector on back, velcro fasteners on sleeves and waist.
Pockets Two pockets on front, two pockets inside, cellular phone pocket inside.
Safety LEVEL-2 Safety, 3M reflective materials for visibility.

AVAILABLE SIZES

Men	XS	S	M	L	XL	2XL	3XL	4XL	5XL
-----	----	---	---	---	----	-----	-----	-----	-----

AVAILABLE COLORS

B Black
BLGR Black / Light-grey / Red
BFY Black / Fluorescent-yellow
BCA Black / Camouflage



LGB



FYB

If you don't wanna get sweat in the summer you **NEED** this jacket! You can remove the linings and you'll get the perfect ventilation at low speed as well. Don't be afraid when the weather turns cold, just put in the waterproof membrane and the removable lining and the triple layer jacket will protect you. With internal waist connection zipper for attachment to MUGENRACE pants.

MATERIALS AND PROTECTIONS

Outer shell	Nylon mesh and polyester 600D composite and neoprene.
Lining	100% polyester with removable thermal lining, waterproof membrane.
Protection	Internal: SafeTech™ Viscoplex™ PU formula protection with Level-2 (EN1621-1:2012; Type-A) certificate.

ERGONOMIC AND SAFETY CERTIFICATE

Fitting	Regular fit
Features	Summer wear, foam protector on back, velcro fasteners on sleeves and waist.
Pockets	Two pockets on front, two pockets inside, cellular phone pocket inside and coin holder at left lower-arm.
Safety	LEVEL-2 Safety, 3M reflective materials for visibility.

AVAILABLE SIZES

Men	XS	S	M	L	XL	2XL	3XL	4XL	5XL
-----	----	---	---	---	----	-----	-----	-----	-----

AVAILABLE COLORS

LGB	Light-grey / Black
FYB	Fluorescent-yellow / Black

REALE AVINTIA RACING TEAM

Working processes...





BR



BW

BFY



FYBW

This triple layer jacket can be used in every weather. The removable thermo lining and the waterproof membrane will help the owner to feel comfortable in cold and rainy weather. If you remove the two linings with the MUGENRACE Airflow ventilation technology system you can enjoy the ride in the hot weather too. The rubberized elbows and the sleeves with velcro fasteners makes the jacket more comfortable.

MATERIALS AND PROTECTIONS

Outer shell	Nylon and polyester 600D composite and neoprene.
Lining	100% polyester with removable thermal lining, waterproof membrane.
Protection	Internal: SafeTech™ Viscoflex™ PU formula protection with Level-2 (EN1621-1:2012; Type-A) certificate.

ERGONOMIC AND SAFETY CERTIFICATE

Fitting	Regular fit
Features	Two MNR-Airflow system openings on front, three MNR-Airflow system openings on back, foam protector on back, velcro fasteners on sleeves and waist.
Pockets	Two pockets on front, two pockets inside, cellular phone pocket inside.
Safety	LEVEL-2 Safety, 3M reflective materials for visibility.

AVAILABLE SIZES

Men	XS	S	M	L	XL	2XL	3XL	4XL	5XL
-----	----	---	---	---	----	-----	-----	-----	-----

AVAILABLE COLORS

BW	Black / White
BR	Black / Red
BFY	Black / Fluorescent-yellow
FYBW	Fluorescent-yellow / Black / White



BLGR



BW

BRW



BFYW

This triple layer jacket can be used in every weather. The removable thermo lining and the waterproof membrane will help the owner to feel comfortable in cold and rainy weather. If you remove the two linings with the MUGENRACE Airflow ventilation technology system you can enjoy the ride in the hot weather too. The rubberized elbows and the sleeves with velcro fasteners makes the jacket more comfortable.

MATERIALS AND PROTECTIONS

Outer shell	Nylon and polyester 600D composite and neoprene.
Lining	100% polyester with removable thermal lining, waterproof membrane.
Protection	Internal: SafeTech™ Viscoflex™ PU formula protection with Level-2 (EN1621-1:2012; Type-A) certificate.

ERGONOMIC AND SAFETY CERTIFICATE

Fitting	Regular fit
Features	Four MNR-Airflow system openings on front, three MNR-Airflow system openings on back, foam protector on back, velcro fasteners on sleeves and waist.
Pockets	Two pockets on front, two pockets inside, cellular phone pocket inside.
Safety	LEVEL-2 Safety, 3M reflective materials for visibility.

AVAILABLE SIZES

Men	XS	S	M	L	XL	2XL	3XL	4XL	5XL
-----	----	---	---	---	----	-----	-----	-----	-----

AVAILABLE COLORS

BW	Black / White
BRW	Black / Red / White
BFYW	Black / Fluorescent-yellow / White
BLGR	Black / Light-grey / Red



BFY



BW

BLG

This triple layer jacket can be used in every weather. The removable thermo lining and the waterproof membrane will help the owner to feel comfortable in cold and rainy weather. If you remove the two linings with the MUGENRACE Airflow ventilation technology system you can enjoy the ride in the hot weather too. The rubberized elbows and the sleeves with velcro fasteners makes the jacket more comfortable.

MATERIALS AND PROTECTIONS

Outer shell	Nylon and polyester 600D composite and neoprene.
Lining	100% polyester with removable thermal lining, waterproof membrane.
Protection	Internal: SafeTech™ Viscoflex™ PU formula protection with Level-2 (EN1621-1:2012; Type-A) certificate.

ERGONOMIC AND SAFETY CERTIFICATE

Fitting	Regular fit
Features	Two MNR-Airflow system openings on front, three MNR-Airflow system openings on back, foam protector on back, velcro fasteners on sleeves and waist.
Pockets	Two pockets on front, two pockets inside, cellular phone pocket inside and coin holder at left lower-arm.
Safety	LEVEL-2 Safety, 3M reflective materials for visibility.

AVAILABLE SIZES

Men	XS	S	M	L	XL	2XL	3XL	4XL	5XL
-----	----	---	---	---	----	-----	-----	-----	-----

AVAILABLE COLORS

B	Black
BLG	Black / Light-grey
BFY	Black / Fluorescent-yellow

BLGR



BW

BFY



BLGFY

This triple layer jacket can be used in every weather. The removable thermo lining and membrane for wind and waterproofing with high level of breathability will help the owner to feel comfortable in cold and rainy weather. If you remove the two linings with the MUGENRACE Airflow ventilation technology system you can enjoy the ride in the hot weather too. The rubberized elbows and the sleeves with velcro fasteners makes the jacket more comfortable.

MATERIALS AND PROTECTIONS

Outer shell	Nylon and polyester 600D composite and neoprene.
Lining	100% polyester with removable thermal lining, waterproof membrane.
Protection	Internal: SafeTech™ Viscoflex™ PU formula protection with Level-2 (EN1621-1:2012; Type-A) certificate.

ERGONOMIC AND SAFETY CERTIFICATE

Fitting	Regular fit
Features	Two MNR-Airflow system openings on front, three MNR-Airflow system openings on back, foam protector on back, velcro fasteners on sleeves and waist.
Pockets	Two pockets on front, two pockets inside, cellular phone pocket inside and coin holder at left lower-arm.
Safety	LEVEL-2 Safety, 3M reflective materials for visibility.

AVAILABLE SIZES

Men	XS	S	M	L	XL	2XL	3XL	4XL	5XL
-----	----	---	---	---	----	-----	-----	-----	-----

AVAILABLE COLORS

BW	Black / White
BFY	Black / Fluorescent-yellow
BLGR	Black / Light-grey / Red
BLGFY	Black / Light-grey / Fluorescent-yellow



BGW



B

BFY

Sporty motorcycle jacket which has perfect protection with the CE protectors inside. This jacket suitable in every weather because it has a removable thermo lining membrane for wind and waterproofing with high level of breathability and offers excellent protection against the weather. The owner can customize with velcro fasteners. It's a perfect choice to cruising in the city or for smaller touring. With internal waist connection zipper for attachment to MUGENRACE pants.

MATERIALS AND PROTECTIONS

Outer shell	Nylon and polyester 600D composite and neoprene.
Lining	100% polyester with removable thermal lining, waterproof membrane.
Protection	Internal: SafeTech™ Viscoflex™ PU formula protection with Level-2 (EN1621-1:2012; Type-A) certificate.

ERGONOMIC AND SAFETY CERTIFICATE

Fitting	Regular fit
Features	Two MNR-Airflow system openings on front, two MNR-Airflow system openings on back, foam protector on back, velcro fasteners on sleeves and waist.
Pockets	Two pockets on front, two pockets inside, cellular phone pocket inside and coin holder at left lower-arm.
Safety	LEVEL-2 Safety, 3M reflective materials for visibility.

AVAILABLE SIZES

Men	XS	S	M	L	XL	2XL	3XL	4XL	5XL
-----	----	---	---	---	----	-----	-----	-----	-----

AVAILABLE COLORS

B	Black
BGW	Black / Grey / White
BFY	Black / Fluorescent-yellow

BFY

Sporty motorcycle jacket which has perfect protection with the CE protectors inside. This jacket suitable in every weather because it has a removable thermo lining membrane for wind and waterproofing with high level of breathability and offers excellent protection against the weather. The owner can customize with snaps adjustment on sleeves. It's a perfect choice to cruising int he city or for smaller touring. With internal waist connection zipper for attachment to MUGENRACE pants. This triple layer jacket can be used in every weather. The removable thermo lining and the waterproof membrane will help the owner to feel comfortable in cold and rainy weather. If you remove the two linings with the MUGENRACE Airflow ventilation technology system you can enjoy the ride in the hot weather too.

MATERIALS AND PROTECTIONS

Outer shell	Nylon and polyester 600D composite and neoprene.
Lining	100% polyester with removable thermal lining, waterproof membrane.
Protection	Internal: SafeTech™ Viscoflex™ PU formula protection with Level-2 (EN1621-1:2012; Type-A) certificate.

ERGONOMIC AND SAFETY CERTIFICATE

Fitting	Regular fit
Features	Two MNR-Airflow system openings on front, one MNR-Airflow system openings on back, foam protector on back, snaps adjustment on sleeves and waist.
Pockets	Two pockets on front, two pockets inside, cellular phone pocket inside.
Safety	LEVEL-2 Safety, 3M reflective materials for visibility.

AVAILABLE SIZES

Men	XS	S	M	L	XL	2XL	3XL	4XL	5XL
-----	----	---	---	---	----	-----	-----	-----	-----

AVAILABLE COLORS

BCA	Black / Fluorescent-yellow
-----	----------------------------



LGBR



BW

BR



BFY

This triple layered jacket is especially made for touring. It has a removable thermo lining and membrane for wind and waterproofing with high level of breathability and offers excellent protection against the weather. Around the waist and on the sleeves can be shorten with velcro fasteners, and at the bottom of the jacket can be customize for the owner with rubber strap. The velcro fastener ventilation system on the chest can fix with snaps. This jacket have more ventilation on the upper area of the back and on the sleeves. The reflective panels are great and there is a big reflective panel at the line of the spine. With internal waist connection zipper for attachment to MUGENRACE pants.

MATERIALS AND PROTECTIONS

Outer shell	Nylon and polyester 600D composite and neoprene.
Lining	100% polyester with removable thermal lining, waterproof membrane.
Protection	Internal: SafeTech™ Viscoflex™ PU formula protection with Level-2 (EN1621-1:2012; Type-A) certificate.

ERGONOMIC AND SAFETY CERTIFICATE

Fitting	Regular long fit
Features	MNR ventilation system on chest, long MNR-Airflow system zippers on sleeves, three MNR-Airflow system openings on back, foam protector on back, velcro adjustments on sleeves and waist.
Pockets	Four pockets on front, one big pocket on back, two pockets inside, cellular phone pocket inside and coin holder at left lower-arm.
Safety	LEVEL-2 Safety, 3M reflective materials for visibility.

AVAILABLE SIZES

Men	XS	S	M	L	XL	2XL	3XL	4XL	5XL
-----	----	---	---	---	----	-----	-----	-----	-----

AVAILABLE COLORS

BW	Black / White
BR	Black / Red
BFY	Black / Fluorescent-yellow
LGBR	Light-grey / Black / Red





BFY

Special long touring jacket with tough appearance and made of premium materials for extreme conditions. The jacket is fully waterproof because it has a waterproof membrane. The newest MUGENRACE Honeycomb Airflow ventilation system makes this jacket suitable in every weather condition. For the safety: inside CE protectors, double stitching and strengthen insertions in the shoulder and in the elbow parts. This jacket has a new unique part: Camel Pack, which allows you to bring water with yourself. This part gonna be a big favourite for Enduro lovers! With internal waist connection zipper for attachment to MUGENRACE pants.

MATERIALS AND PROTECTIONS

Outer shell	Nylon and polyester 600D composite and neoprene.
Lining	100% polyester with removable thermal lining, waterproof membrane.
Protection	Internal: SafeTech™ Viscoflex™ PU formula protection with Level-2 (EN1621-1:2012; Type-A) certificate.

ERGONOMIC AND SAFETY CERTIFICATE

Fitting	Regular long fit
Features	MNR-Honeycomb ventilation system on chest, long MNR-Airflow system zippers on sleeves, three MNR-Airflow system openings on back, foam protector on back, velcro adjustments on sleeves and waist.
Pockets	Four pockets on front, one big pocket on back, two pockets inside, cellular phone pocket inside and coin holder at left lower-arm.
Safety	LEVEL-2 Safety, 3M reflective materials for visibility.

AVAILABLE SIZES

Men	XS	S	M	L	XL	2XL	3XL	4XL	5XL
-----	----	---	---	---	----	-----	-----	-----	-----

AVAILABLE COLORS

BFY	Black / Fluorescent-yellow
-----	----------------------------





BFY

This jacket is made for long touring. All the comfort and safety properties are on the highest level. With the removable waterproof membrane and the also removable thermo lining suitable for every weather condition. The special Airflow ventilation system's big capacity depends on the new magnet system. This jacket also has the newest Camel Pack in the back. With internal waist connection zipper for attachment to MUGENRACE pants.

MATERIALS AND PROTECTIONS

Outer shell	Nylon and polyester 600D composite and neoprene.
Lining	100% polyester with removable thermal lining, waterproof membrane.
Protection	Internal: SafeTech™ Viscoflex™ PU formula protection with Level-2 (EN1621-1:2012; Type-A) certificate.

ERGONOMIC AND SAFETY CERTIFICATE

Fitting	Regular long fit
Features	MNR-Airflow system openings on front, long MNR-Airflow system zippers on sleeves, three MNR-Airflow system openings on back, foam protector on back, snaps adjustments on sleeves and waist.
Pockets	Six pockets on front, two pockets on back, two pockets inside, cellular phone pocket inside and coin holder at left lower-arm.
Safety	LEVEL-2 Safety, 3M reflective materials for visibility.

AVAILABLE SIZES

Men	XS	S	M	L	XL	2XL	3XL	4XL	5XL
-----	----	---	---	---	----	-----	-----	-----	-----

AVAILABLE COLORS

BFY	Black / Fluorescent-yellow
-----	----------------------------





B



BR

It's a special long motorcycle jacket which got an elegant appereance. Very good jacket for everyday use going to work. The elegant looking outhter shell got a really good CE protection inside for the shoulders the spine and for the elbows like the other touring jackets. With a belt around the waist it can be fix to the owner's body.

MATERIALS AND PROTECTIONS

Outer shell	Waxed Cordura textile.
Lining	100% polyester with removable thermal lining, waterproof membrane.
Protection	Internal: SafeTech™ Viscoflex™ PU formula protection with Level-2 (EN1621-1:2012; Type-A) certificate.

ERGONOMIC AND SAFETY CERTIFICATE

Fitting	Regular long fit
Features	Foam protector on back, snaps adjustments on sleeves.
Pockets	Four pockets on front, two pockets inside, cellular phone pocket
Safety	LEVEL-2 Safety.

AVAILABLE SIZES

Men	XS	S	M	L	XL	2XL	3XL	4XL	5XL
-----	----	---	---	---	----	-----	-----	-----	-----

AVAILABLE COLORS

BR	Black
BR	Brown

LGBR



BLGR

The jacket with the MUGENRACE Airflow system parts specially made for touring. On the chest there are big ventilation pockets with zip. The biggest ventilation part is on the back of the jacket because if you want you can take off almost the whole back of your jacket. After that you can remove the thermo lining and the waterproof membrane and you almost get a mesh jacket. The jacket has a lot of big pockets which makes more practical for touring. With internal waist connection zipper for attachment to MUGENRACE pants.

MATERIALS AND PROTECTIONS

Outer shell	Nylon and polyester 600D composite and neoprene.
Lining	100% polyester with removable thermal lining, waterproof membrane.
Protection	Internal: SafeTech™ Viscoflex™ PU formula protection with Level-2 (EN1621-1:2012; Type-A) certificate.

ERGONOMIC AND SAFETY CERTIFICATE

Fitting	Regular long fit
Features	Four season wear, MNR-Airflow system openings on front, long MNR-Airflow system zippers on sleeves, three MNR-Airflow system openings on back, removable MNR Airflow system on back, foam protector on back, snaps adjustments on sleeves and waist.
Pockets	Six pockets on front, big pocket on back, two pockets inside, cellular phone pocket inside.
Safety	LEVEL-2 Safety, 3M reflective materials for visibility.

AVAILABLE SIZES

Men	XS	S	M	L	XL	2XL	3XL	4XL	5XL
-----	----	---	---	---	----	-----	-----	-----	-----

AVAILABLE COLORS

BLGR	Black / Light-grey / Red
LGBR	Light-grey / Black / Red





LGBFO



LGBFY

This jacket is made for touring specially for the ladies. The quality and the appereance of the jacket is higher category. The triple layer and the special honeycomb Airflow ventilation system on the sleeves, shoulder and on the back makes this jacket perfectly comfortable in every weather. The neck area made of customizable neoprene material. Around the waist and the sleeves can be shorten with velcro fasteners. With internal waist connection zipper for attachment to MUGENRACE pants.

MATERIALS AND PROTECTIONS

Outer shell	Nylon and polyester 600D composite and neoprene.
Lining	100% polyester with removable thermal lining, waterproof membrane.
Protection	Internal: SafeTech™ Viscoflex™ PU formula protection with Level-2 (EN1621-1:2012; Type-A) certificate.

ERGONOMIC AND SAFETY CERTIFICATE

Fitting	Regular long fit
Features	Four season wear, MNR-Airflow system openings on front, long MNR-Airflow system zippers on sleeves, three MNR-Airflow system openings on back, removable MNR Airflow system on back, foam protector on back, snaps adjustments on sleeves and waist.
Pockets	Six pockets on front, big pocket on back, two pockets inside, cellular phone pocket inside and coin holder at left lower-arm.
Safety	LEVEL-2 Safety, 3M reflective materials for visibility.

AVAILABLE SIZES

Women	2XS	XS	S	M	L	XL
-------	-----	----	---	---	---	----

AVAILABLE COLORS

LGBFY	Light-grey / Black / Fluorescent-yellow
LGBFO	Light-grey / Black / Fluorescent-orange

FOB



B

BEB



FYB

Developed for touring especially for women. With removable lining and membrane for wind and water-proofing with high level of breathability and offers excellent protection against the weather. There are special MUGENRACE Airflow ventilation system on the chest, the back and on the sleeves. This jacket got power absorber insertions at the back and the keybone. Around the waist and the bottom of the jacket can be shorten with velcro fasteners and on the sleeves with snaps. With internal waist connection zipper for attachment to MUGENRACE pants.

MATERIALS AND PROTECTIONS

Outer shell	Nylon and polyester 600D composite and neoprene.
Lining	100% polyester with removable thermal lining, waterproof membrane.
Protection	Internal: SafeTech™ Viscoflex™ PU formula protection with Level-2 (EN1621-1:2012; Type-A) certificate.

ERGONOMIC AND SAFETY CERTIFICATE

Fitting	Regular fit
Features	Four season wear, MNR-Airflow system openings on front and sleeves, three MNR-Airflow system openings on back, foam protector on back, velcro and snaps adjustments on sleeves and waist.
Pockets	Four pockets on front, two pockets inside, cellular phone pocket inside and coin holder at left lower-arm.
Safety	LEVEL-2 Safety, 3M reflective materials for visibility.

AVAILABLE SIZES

Women	2XS	XS	S	M	L	XL
-------	-----	----	---	---	---	----

AVAILABLE COLORS

B	Black
BEB	Black / Beige
FYB	Fluorescent-yellow / Black
FOB	Fluorescent-orange / Black

TEXTILE
TROUSERS



BFY



B

Professional touring pants you’ve been waiting for! It has double stitching and strenghten insertions for durability and maximize the safety in extreme conditions. The triple layered pant has a removable thermo lining and a waterproof membrane. For the perfect ventilation the jacket has the MUGENRACE Airflow system. At the bottom area there are anti-sliding insertion parts with them the rider will have the best seat position at all time. With internal waist connection zipper for attachment to MUGENRACE jackets.

MATERIALS AND PROTECTIONS

Outer shell	Nylon and polyester 600D composite.
Lining	100% polyester with removable thermal lining, waterproof membrane.
Protection	Internal: SafeTech™ Viscoflex™ PU formula protection with Level-2 (EN1621-1:2012; Type-A) certificate.

ERGONOMIC AND SAFETY CERTIFICATE

Fitting	Regular fit with three different lengths.
Features	Four season wear, MNR Airflow system vents on the front, waist and legs, velcro fastener on waist.
Pockets	Two pockets on front, two on side.
Safety	LEVEL-2 Safety

AVAILABLE SIZES

Available in three different lenghts. Short, standard and long.

Men	XS	S	M	L	XL	2XL	3XL	4XL	5XL
Women	2XS	XS	S	M	L	XL			

AVAILABLE COLORS

B	Black
LGB	Light-grey / Black



B



BE

Triple layered touring pant which has a removable bridle. It has a removable thermo lining and a water-proof membrane and suitable in all weather conditions. We can activate the Muganrace Airflow system if we open up the pockets on the legs and get a good ventilation for touring. With internal waist connection zipper for attachment to MUGENRACE jackets.

MATERIALS AND PROTECTIONS

Outer shell	Nylon and polyester 600D composite.
Lining	100% polyester with removable thermal lining, waterproof membrane.
Protection	Internal: SafeTech™ Viscoflex™ PU formula protection with Level-2 (EN1621-1:2012; Type-A) certificate.

ERGONOMIC AND SAFETY CERTIFICATE

Fitting	Regular fit with three different lengths.
Features	Four season wear, MNR Airflow system vents on the front, waist and legs, velcro fastener on waist.
Pockets	Two pockets on front, two on side.
Safety	LEVEL-2 Safety

AVAILABLE SIZES

Available in three different lenghts. Short, standard and long.

Men	XS	S	M	L	XL	2XL	3XL	4XL	5XL
Women	2XS	XS	S	M	L	XL			

AVAILABLE COLORS

B	Black
BE	Beige



LGB



B

Textile touring pants made for everyday use. Triple layer pants, which means you can remove the thermo lining and the waterproof membrane too. For the perfect ventilation there are zippered MUGENRACE Airflow system on the thighs, which can fix with snaps. Around the waist there is two zip a short and a longer one that makes the pant compatible with different type of MUGENRACE textile jackets.

MATERIALS AND PROTECTIONS

Outer shell	Nylon and polyester 600D composite.
Lining	100% polyester with removable thermal lining, waterproof membrane.
Protection	Internal: SafeTech™ Viscoplex™ PU formula protection with Level-2 (EN1621-1:2012; Type-A) certificate.

ERGONOMIC AND SAFETY CERTIFICATE

Fitting	Regular fit with three different lenghts.
Features	Four season wear, MNR Airflow system vents on sides and legs, velcro fastener on waist, strenghten material on the bottom.
Pockets	Two pockets on front.
Safety	LEVEL-2 Safety

AVAILABLE SIZES

Available in three different lenghts. Short, standard and long.

Men	XS	S	M	L	XL	2XL	3XL	4XL	5XL
Women	2XS	XS	S	M	L	XL			

AVAILABLE COLORS

B	Black
LGB	Light-grey / Black



B

Entrance level to the touring textile pants. These pants has the same protection as the other touring pants with the CE protectors inside. The double layer pants can be more comfortable with the MU-GENRACE Airflow system. On the bottom it has anti-sliding parts for the best seat position. With internal waist connection zipper for attachment to MUGENRACE jackets.

MATERIALS AND PROTECTIONS

Outer shell	Nylon and polyester 600D composite.
Lining	100% polyester with removable thermal lining, waterproof membrane.
Protection	Internal: SafeTech™ Viscoplex™ PU formula protection with Level-2 (EN1621-1:2012; Type-A) certificate.

ERGONOMIC AND SAFETY CERTIFICATE

Fitting	Regular fit with three different lenghts.
Features	Early spring and late autumn wear, MNR Airflow system vents on front.
Pockets	Two pockets on front.
Safety	LEVEL-2 Safety

AVAILABLE SIZES

Available in three different lenghts. Short, standard and long.

Men	XS	S	M	L	XL	2XL	3XL	4XL	5XL
Women	2XS	XS	S	M	L	XL			

AVAILABLE COLORS

B	Black
---	-------

GLOVES



BRW



B

BW



BFYW

Long racing cowhide leather glove which absolve the biggest expectations. Made of really fine leather that makes the glove very comfortable. At the head of hand there is a double layer with carbon protectors. On the palm there are anti-sliding parts and power ansorber insertions because of the high safety requirements. The exterior fingers got double strenghtening. The fingers has plastic vents for the perfect cooling.

MATERIALS AND PROTECTIONS

Outer shell	Cowhide leather.
Lining	100% polyester.
Protection	External: Italian made TPU polyurethane protectors.

ERGONOMIC AND SAFETY CERTIFICATE

Fitting	Racing fit
Features	Cow leather highly abrasion resistant glove, carbon-fibre knuckle protector, finger-safety carbon and hard plastic protection, sweet proof, velcro fastener on wrist, double leather and kevlar padding at palm.
Safety	LEVEL-2 Safety

AVAILABLE SIZES

Men	2XS	XS	S	M	L	XL	2XL
-----	-----	----	---	---	---	----	-----

AVAILABLE COLORS

B	Black
BW	Black / White
BRW	Black / Red
BFYW	Black / Fluorescent-yellow



BW



B

BRW



BFYW

This glove is developed for racing made of premium quality cowhide leather. It has a longer cuff outside with rubberized parts and from the inside with power abrorter insertions. The head of the hand and the fingers got carbon protectors for maximum safety. Under the protectors there are double layered premium leather. On the palm there are anti-sliding and power absorber insertions. For the perfect cooling the side of the fingers got perforated.

MATERIALS AND PROTECTIONS

Outer shell	Cowhide leather.
Lining	100% polyester.
Protection	External: Italian made TPU polyurethane protectors.

ERGONOMIC AND SAFETY CERTIFICATE

Fitting	Racing fit
Features	Cow leather highly abrasion resistant glove, carbon-fibre knuckle protector, finger-safety carbon and hard plastic protection, sweet proof, velcro fastener on wrist, double leather and kevlar padding at palm.
Safety	LEVEL-2 Safety

AVAILABLE SIZES

Men	2XS	XS	S	M	L	XL	2XL
-----	-----	----	---	---	---	----	-----

AVAILABLE COLORS

B	Black
BW	Black / White
BRW	Black / Red
BFYW	Black / Fluorescent-yellow



BW



B

Short cowhide leather gloves with perforated parts at the head of the hand. This glove suitable for riding every type of motorcycle at the summer. It has carbon protectors at the head of the hand and power absorber parts at the fingers. The palm has a double strenghtened layer and anti-sliding insertions. The rubberized cuff makes the glove more comfortable.

MATERIALS AND PROTECTIONS

Outer shell	Cowhide leather.
Lining	100% polyester.
Protection	External: Italian made TPU polyurethane protectors.

ERGONOMIC AND SAFETY CERTIFICATE

Fitting	Street sport fit
Features	Cow leather highly abrasion resistant glove, perforated leather fingers and wrists, carbon-fibre knuckle protector, elasticated leather panel, finger-safety carbon and hard plastic protection, sweet proof, velcro fastener on wrist, double leather and padding at palm.
Safety	LEVEL-2 Safety

AVAILABLE SIZES

Men	2XS	XS	S	M	L	XL	2XL
-----	-----	----	---	---	---	----	-----

AVAILABLE COLORS

B	Black
BW	Black / White



B



BW

Short textile glove with perforated upper construction with perfect ventilation. There are TPU material protectors on the fingers an on the head of the hand for maximum safety. The palm area has anti-sliding pads and power absorber insertions. This glove is suitable to ride the city in summertime.

MATERIALS AND PROTECTIONS

Outer shell	Cowhide leather and cordura composite.
Lining	100% polyester.
Protection	External: Italian made TPU polyurethane protectors.

ERGONOMIC AND SAFETY CERTIFICATE

Fitting	Street sport fit
Features	Cow leather highly abrasion resistant glove perforated l fingers and wrists, carbon-fibre knuckle protector, elasticated leather panel, finger-safety carbon and hard plastic protection, sweet proof, velcro fastener on wrist, double leather and padding at palm.
Safety	LEVEL-2 Safety

AVAILABLE SIZES

Men	2XS	XS	S	M	L	XL	2XL
-----	-----	----	---	---	---	----	-----

AVAILABLE COLORS

B	Black
BW	Black / White



BW



B

This glove is really elegant and almost the whole glove is perforated so it has a perfect ventilation. Under the premium quality cowhide leather on the fingers and on the head of the hand there are TPU protectors for safety. On the palm power absorber insertions and double layer leather keep the hands safe. With the velcro cuff the glove easy to entry and secure closure.

MATERIALS AND PROTECTIONS

Outer shell	Perforated cowhide leather.
Lining	100% polyester.
Protection	External: Italian made TPU polyurethane protectors.

ERGONOMIC AND SAFETY CERTIFICATE

Fitting	Street sport fit
Features	Cow leather highly abrasion resistant glove, fully perforated summer gloves, sweat proof, velcro fastener on wrist, double leather and padding at palm.
Safety	LEVEL-2 Safety

AVAILABLE SIZES

Men	2XS	XS	S	M	L	XL	2XL
-----	-----	----	---	---	---	----	-----

AVAILABLE COLORS

B	Black
BW	Black / White

Simone CORSI

Leave the box...



BOOTS



BFY

This Mugenrace boot is the new era of the mugenrace racing boots! With the rubberized and the soft layer on the feet really comfortable to wear. The newest TPU protectors and the strenght zip with the ratchet harness responsible for the protection. The bootlap got an anti-sliding layer for the maximum safety.

MATERIALS AND PROTECTIONS

Outer shell	Micro Fiber black 2mm + KPU Direct Inject Front Stretch Panel lamited with felt + Micro Stretch Panel 0.8mm lamited on elasticated fabric
Lining	100% Polyester 3D mesh lining
Protection	MNR TPR Shin Label, MNR printed on vamp side, TPU Shin, Calf, Heel & Gear Panel.

ERGONOMIC AND SAFETY CERTIFICATE

Style	Racing boots
Features	Upper in Micro Fiber 2mm thickness + RaceTech Vulcanized Imported Rubber Outsole + TPU Gear shifter guard + Polyester Breathable Air Mesh + Durable hight quality padders socks + Punctuer Resistant Plastic Insole + TPU Protector (Shin, Calf, Reinforced Heel) + Metal + TPU (Toe Slider) + Buckle Closure system + Reinforced Toe Area
Safety	LEVEL-2 Safety

AVAILABLE SIZES

Men	37	38	39	40	41	42	43	44	45	46	47
-----	----	----	----	----	----	----	----	----	----	----	----

AVAILABLE COLORS

BFY	Black / Fluorescent-yellow
-----	----------------------------

Román RAMOS

The spanish Román racing in World Superbike Championship in a private Kawasaki team.
The Team GoEleven's rider wore MUGENRACE suit, gloves and boots in 2017.





W



B

BFY

FY

BL

These boots are developed with the experiences based on race track circumstances for maximum safety. The premium quality leather boot is perforated on the upper parts for the perfect ventilation. Special TPU protectors keep the heel the ankle and the shinbone safe. For the maximum safety the zip made of very strong material and the bootlap got anti-sliding layer. At the upper area we found the shift pad made of strong material. The exterior sliders metal insertions are changeable.

MATERIALS AND PROTECTIONS

Outer shell	Micro Fiber White + PU Coated Nubuck Leather 2mm + Micro Fiber stretch panel 0.8mm pinup + 6mm EVA Hard + Carbon Material on collar + 6mm EVA Hard + Stretch Panel PU DMX Flex + 8mm EVA Soft
Lining	100% Polyester 3D mesh lining
Protection	MNR TPR Shin Label, MNR printed on vamp side, TPU Shin, Calf, Heel & Gear Panel.

ERGONOMIC AND SAFETY CERTIFICATE

Style	Racing boots
Features	Upper in Microfiber + PU Coated Leather 2mm thickness, Hi-Tech Imported Vulcanized Rubber sole, Soft inserts, TPU Gear shifter guard + Shin with Metal Buckle, Calf & Heel, Durable hight quality Toe slider (Metal + TPU), Punctuer Resistant Plastic Insole
Safety	LEVEL-2 Safety

AVAILABLE SIZES

Men	37	38	39	40	41	42	43	44	45	46	47
-----	----	----	----	----	----	----	----	----	----	----	----

AVAILABLE COLORS

B	Black
BFY	Black / Fluorescent-yellow
W	White
FY	Fluorescent-yellow
BL	Blue



R



B

BFY

W

FY

This leather boot is suitable for touring and racing too. It has TPU protectors and very strong Zip for perfect safety. For the exellent ventilation on the protectors got vents and the leather parts are perforated. The bootlap made of special material which contains anti-sliding layer to make the riding safety. The shift pad and the slider with changeable metal insertion are at the front of the peg.

MATERIALS AND PROTECTIONS

Outer shell	Micro Fiber White 2mm + PU Coated Nubuck Leather soft + Micro Fiber stretch panel 0.8mm pinup + 6mm EVA Hard + Micro Fiber stretch panel 0.8mm plain + Stretch codura + 8mm EVA + Shin padding with Latex sheet 8mm + 4mm EVA White + Ankle foam with Latex sheet 3mm + 4mm EVA (Double Layer)
Lining	100% Polyester 3D mesh lining
Protection	MNR TPR Shin Label, MNR printed on vamp side, TPU Shin, Calf, Heel & Gear Panel.

ERGONOMIC AND SAFETY CERTIFICATE

Style	Racing boots
Features	Upper in PU Coated Leather 2mm thickness, Hi-Tech Imported Vulcanized Rubber sole Printed Mugen Race lining, Durable hight quality padders socks, Punctuer Resistant Plastic Insole, TPU protector (Shin, Shin Slider, Calf, Heel & Gear Panel), TPU + Metal Toe Slider
Safety	LEVEL-2 Safety

AVAILABLE SIZES

Men	37	38	39	40	41	42	43	44	45	46	47
-----	----	----	----	----	----	----	----	----	----	----	----

AVAILABLE COLORS

B	Black
BFY	Black / Fluorescent-yellow
W	White
R	Red
FY	Fluorescent-yellow
BL	Blue



B

Really comfortable fully waterproof short touring boot. Made of high quality micro-fiber material with polyester lining. For maximum safety there are exterior protectors on the shiftpad, the heel and the peg. The highly durable bootlap has an anti-sliding layer. This boot is a perfect choice for small or long touring.

MATERIALS AND PROTECTIONS

Outer shell	Microfiber Black 2mm, TPU injection on Microfiber
Lining	Soft Polyester Lining
Protection	Reinforced Heel for Improved Grip & ankle protection.

ERGONOMIC AND SAFETY CERTIFICATE

Style	Touring boots
Features	Upper in Micro Fiber 2mm Thickness, High Density Rubber Sole, Polyester Breathable Air Mesh, Water proof construction, Reinforced Heel for Improved Grip & ankle protection, YKK zipper with Velcro adjustment, High Quality and Removable Foot bed, Anti-Twist Mid-sole
Safety	LEVEL-2 Safety (EN 13634:2017 2 2 2 2 IPA IPS)

AVAILABLE SIZES

Men	37	38	39	40	41	42	43	44	45	46	47
-----	----	----	----	----	----	----	----	----	----	----	----

AVAILABLE COLORS

B	Black
---	-------



B

Really comfortable fully waterproof long touring boot. Made of high quality micro-fiber material with polyester lining. For maximum safety there are exterior protectors on the shiftpad, the heel and the peg. The highly durable bootlap has an anti-sliding layer. This boot is a perfect choice for small or long touring.

MATERIALS AND PROTECTIONS

Outer shell	Microfiber Black 2mm, TPU injection on Microfiber
Lining	Soft Polyester Lining
Protection	Reinforced Heel for Improved Grip & ankle protection.

ERGONOMIC AND SAFETY CERTIFICATE

Style	Touring boots
Features	Upper in Micro Fiber 2mm Thickness, High Density Rubber Sole, Polyester Breathable Air Mesh, Water proof construction, Reinforced Heel for Improved Grip & ankle protection, YKK zipper with Velcro adjustment, High Quality and Removable Foot bed, Anti-Twist Mid-sole
Safety	LEVEL-2 Safety (EN 13634:2017 2 2 2 2 IPA IPS)

AVAILABLE SIZES

Men	37	38	39	40	41	42	43	44	45	46	47
-----	----	----	----	----	----	----	----	----	----	----	----

AVAILABLE COLORS

B	Black
---	-------



BFY



BW

These premium quality leather boots is almost the same as the racing boots, just a bit shorten. Also have the same protection for the ankle and for the knee, the very strong zip, the shift pad and the changeable metal insertion slider. It's a good choice for riding the city, everyday use or for some touring.

MATERIALS AND PROTECTIONS

Outer shell	Micro Fiber White 2mm + Micro Fiber Black 2mm, New Hatching Rexine Material on Collar PU DMX Flex + 6mm EVA Hard, Micro Fiber Red on back stretch panel
Lining	100% Polyester 3D mesh lining
Protection	Rubber Flap Label, MNR TPU Heel Black

ERGONOMIC AND SAFETY CERTIFICATE

Style	Street racing boots
Features	Upper in Microfiber 2mm thickness, Vulcanized Rubber sole, Soft inserts, TPU Gear shifter guard, TPU heel counter, Durable hight quality Toe slider (Metal + TPU), Punctuer Resistant Plastic Insole
Safety	LEVEL-2 Safety

AVAILABLE SIZES

Men	37	38	39	40	41	42	43	44	45	46	47
-----	----	----	----	----	----	----	----	----	----	----	----

AVAILABLE COLORS

BW	Black / White
BFY	Black / Fluorescent-yellow

B

Comfortable leather boots for riding int he city with practical lace system. This boot has special Interior protectors for the ankle and exterior protectors for the knee. The shift pad and the slider with change-able metal insertion are at the front of the peg. Outside material of the boot is premium leather, inside the boot there is a breatheable lining with waterproof membrane.

MATERIALS AND PROTECTIONS

Outer shell	Micro Fiber White 2mm + Micro Fiber Black 2mm, New Hatching Rexine Material on Collar PU DMX Flex + 6mm EVA Hard, Micro Fiber Red on back stretch panel
Lining	100% Polyester 3D mesh lining
Protection	MNR TPU Heel Black

ERGONOMIC AND SAFETY CERTIFICATE

Style	Street racing boots
Features	Upper in Microfiber 2mm thickness, Vulcanized Rubber sole, Soft inserts, TPU Gear shifter guard, TPU heel counter, Durable hight quality Toe slider (Metal + TPU), Punctuer Resistant Plastic Insole
Safety	LEVEL-2 Safety

AVAILABLE SIZES

Men	37	38	39	40	41	42	43	44	45	46	47
-----	----	----	----	----	----	----	----	----	----	----	----

AVAILABLE COLORS

B	Black
---	-------

KEVLAR
JEANS



B

Fashionable motorcycle jeans with perfect protection. These jeans very good choice for someone who looking for similar jeans like streetwear. If someone wants to look good but need safety it's the perfect deal. With the kevlar insertions it's much more strenghten then the regular jeans you can buy. The knee area is protected by CE protectors.

Jeans has a nice cuts and comfort stretch for better fitting. Under the denim is Aramid fiber in all the high abrasion and impact areas. Comfortable and perfect for everyday riding, but offer the benefit of abrasion resistant protection in the critical areas riders need protection.

MATERIALS AND PROTECTIONS

Outer shell	11.5 oz elastic denim, 98% cotton, 2% elastane. Aramid Fiber reinforcement in all high abrasion and impact areas.
Lining	100% polyester anti-bacterial fixed mesh lining with pockets for optional knee pads and hip armor
Protection	Internal: SafeTech™ Viscoflex™ PU formula protection with Level-2 (EN1621-1:2012; Type-A) certificate. Hip protectors prepared.

ERGONOMIC AND SAFETY CERTIFICATE

Fitting	Urban, scooter and street, on road style, slim fit men with three different lengths.
Features	High quality brushed steel waist button, Antique metal front zipper semi lock, Lined pockets for comfort, Perfect to wear over your boots, Machine wash and dry, Adjustable knee protectors pockets according to riders positions, 4 way stretch material on crotch area, Accordion fabric-Spandex panels are used on top of the knees for the finest non-binding fit possible.
Pockets	4 Cargo pockets.
Safety	LEVEL-2 Safety, Kevlar® and DuPont™ are trademarks or registered trademarks of E.I. DuPont de Nemours and Company.

AVAILABLE SIZES

Available in three different lengths. Short (32L), standard (34L) and long (36L).

Men	29W	30W	32W	34W	36W	38W	40W
-----	-----	-----	-----	-----	-----	-----	-----

AVAILABLE COLORS

B	Black
---	-------



BL

Fashionable motorcycle jeans with perfect protection. These jeans very good choice for someone who looking for similar jeans like streetwear. If someone wants to look good but need safety it's the perfect deal. With the kevlar insertions it's much more strenghten then the regular jeans you can buy. The knee area is protected by CE protectors.

Jeans has a nice cuts and comfort stretch for better fitting. Under the denim is Aramid fiber in all the high abrasion and impact areas. Comfortable and perfect for everyday riding, but offer the benefit of abrasion resistant protection in the critical areas riders need protection.

MATERIALS AND PROTECTIONS

Outer shell	11.5 oz elastic denim, 98% cotton, 2% elastane. Aramid Fiber reinforcement in all high abrasion and impact areas.
Lining	100% polyester anti-bacterial fixed mesh lining with pockets for optional knee pads and hip armor
Protection	Internal: SafeTech™ Viscoflex™ PU formula protection with Level-2 (EN1621-1:2012; Type-A) certificate. Hip protectors prepared.

ERGONOMIC AND SAFETY CERTIFICATE

Fitting	Urban, scooter and street, on road style, slim fit men with three different lengths.
Features	High quality brushed steel waist button, Antique metal front zipper semi lock, Lined pockets for comfort, Perfect to wear over your boots, Machine wash and dry, Adjustable knee protectors pockets according to riders positions, 4 way stretch material on crotch area, Accordion fabric-Spandex panels are used on top of the knees for the finest non-binding fit possible.
Pockets	Two on front, two on back.
Safety	LEVEL-2 Safety, Kevlar® and DuPont™ are trademarks or registered trademarks of E.I. DuPont de Nemours and Company.

AVAILABLE SIZES

Available in three different lengths. Short (32L), standard (34L) and long (36L).

Men	29W	30W	32W	34W	36W	38W	40W
-----	-----	-----	-----	-----	-----	-----	-----

AVAILABLE COLORS

BL	Blue
----	------



B

Fashionable motorcycle jeans with perfect protection. These jeans very good choice for someone who looking for similar jeans like streetwear. If someone wants to look good but need safety it's the perfect deal. With the kevlar insertions it's much more strenghten then the regular jeans you can buy. The knee area is protected by CE protectors.

Jeans has a straight leg and a relaxed cut. Under the denim is Aramid fiber in all the high abrasion and impact areas. Comfortable and perfect for everyday riding, but offer the benefit of abrasion resistant protection in the critical areas riders need protection.

MATERIALS AND PROTECTIONS

Outer shell	11.5 oz high quality durable denim, 100% cotton. Aramid Fiber reinforcement in all high abrasion and impact areas.
Lining	100% polyester anti-bacterial fixed mesh lining with pockets for optional knee pads and hip armor
Protection	Internal: SafeTech™ Viscoflex™ PU formula protection with Level-2 (EN1621-1:2012; Type-A) certificate. Hip protectors prepared.

ERGONOMIC AND SAFETY CERTIFICATE

Fitting	Urban regular fit men with three different lenghts.
Features	High quality brushed steel waist button, Antique metal front zipper semi lock, Lined pockets for comfort, Perfect to wear over your boots, Machine wash and dry, Outer protectors pockets for easy access, adjustable knee protectors pockets according to riders positions. Two on front, two on back.
Pockets	
Safety	LEVEL-2 Safety, Kevlar® and DuPont™ are trademarks or registered trademarks of E.I. DuPont de Nemours and Company.

AVAILABLE SIZES

Available in three different lenghts. Short (32L), standard (34L) and long (36L).

Men	29W	30W	32W	34W	36W	38W	40W
-----	-----	-----	-----	-----	-----	-----	-----

AVAILABLE COLORS

B	Black
---	-------



G

Fashionable motorcycle jeans with perfect protection. These jeans very good choice for someone who looking for similar jeans like streetwear. If someone wants to look good but need safety it's the perfect deal. With the kevlar insertions it's much more strenghten then the regular jeans you can buy. The knee area is protected by CE protectors.

Jeans has a nice cuts and comfort stretch for better fitting. Under the denim is Aramid fiber in all the high abrasion and impact areas. Comfortable and perfect for everyday riding, but offer the benefit of abrasion resistant protection in the critical areas riders need protection.

MATERIALS AND PROTECTIONS

Outer shell	11.5 oz elastic denim, 98% cotton, 2% elastane. Aramid Fiber reinforcement in all high abrasion and impact areas.
Lining	100% polyester anti-bacterial fixed mesh lining with pockets for optional knee pads and hip armor
Protection	Internal: SafeTech™ Viscoflex™ PU formula protection with Level-2 (EN1621-1:2012; Type-A) certificate. Hip protectors prepared.

ERGONOMIC AND SAFETY CERTIFICATE

Fitting	Urban, scooter and street, on road style, slim fit men with three different lenghts.
Features	High quality brushed steel waist button, Antique metal front zipper semi lock, Lined pockets for comfort, Perfect to wear over your boots, Machine wash and dry, Ventilation pockets will let the fresh air inside when riding during warm summer days, Adjustable knee protectors pockets according to riders positions, 4 way stretch material on crotch area, Accordion fabric-Spandex panels are used on top of the knees and across the rear area next to the waist for the finest non-binding fit possible.
Pockets	Two on front, two on back.
Safety	LEVEL-2 Safety, Kevlar® and DuPont™ are trademarks or registered trademarks of E.I. DuPont de Nemours and Company.

AVAILABLE SIZES

Available in three different lenghts. Short (32L), standard (34L) and long (36L).

Men	29W	30W	32W	34W	36W	38W	40W
-----	-----	-----	-----	-----	-----	-----	-----

AVAILABLE COLORS

G	Grey
---	------

RAIN SUITS



BFY

Fully waterproof rainsuit with rubberized wrists and waist. The neck area made of very comfortable neoprene material. For the visibility on the there are neon colored lines on both side of the suit.

MATERIALS AND PROTECTIONS

Outer shell	Nylon.
Lining	Without lining.
Protection	Without protectors.

ERGONOMIC AND SAFETY CERTIFICATE

Fitting	Regular fit
Features	100% waterproof material, rubberized wrist and waist, neoprene neck

AVAILABLE SIZES

Men	XS	S	M	L	XL	2XL	3XL	4XL	5XL
-----	----	---	---	---	----	-----	-----	-----	-----

AVAILABLE COLORS

BFY	Black / Fluorescent-yellow
-----	----------------------------



GFY

Fully waterproof rainsuit with rubberized wrists and waist. The neck area made of very comfortable neoprene material.

MATERIALS AND PROTECTIONS

Outer shell	Nylon.
Lining	Without lining.
Protection	Without protectors.

ERGONOMIC AND SAFETY CERTIFICATE

Fitting	Regular fit
Features	100% waterproof material, rubberized wrist and waist, neoprene neck

AVAILABLE SIZES

Men	XS	S	M	L	XL	2XL	3XL	4XL	5XL
-----	----	---	---	---	----	-----	-----	-----	-----

AVAILABLE COLORS

B	Black
---	-------

ACCESSORIES

MNR-010-S



Knee slider with velcro fixing.

MNR-012-S



B
Knee slider with velcro fixing in black or white color.

W



Simone CORSI

The last moments before start...

MUGENRACE
JEANS



B



Motorcycle jacket with removable hoodie made of very lightweight material. The jacket is waterproof, and has CE protectors at the back the shoulders and the elbow. It's a really good choice to riding in the city or to ride a scooter.

MATERIALS AND PROTECTIONS

Outer shell	Softshell.
Lining	100% polyester
Protection	Internal: SafeTech™ Viscoflex™ PU formula protection with Level-2 (EN1621-1:2012; Type-A) certificate.

ERGONOMIC AND SAFETY CERTIFICATE

Fitting	Regular fit
Features	Lightweight material, detachable hoodie, MNR-Airflow system openings on front, sleeves and back.
Pockets	Two pockets on front, one pocket inside.
Safety	CE Protectors

AVAILABLE SIZES

Men	XS	S	M	L	XL	2XL	3XL	4XL	5XL
-----	----	---	---	---	----	-----	-----	-----	-----

AVAILABLE COLORS

B	Black
---	-------

GFY



GFO

Fashionable jacket for everyday use softshell material which is rain-resistance. Without any protectors!

MATERIALS AND PROTECTIONS

Outer shell	Softshell.
Lining	100% polyester

ERGONOMIC AND SAFETY CERTIFICATE

Fitting	Regular fit
Features	Spring/autumn wear, wrists adjustable with velcro fastener, adjustable hoodie.
Pockets	Three pockets on front.

AVAILABLE SIZES

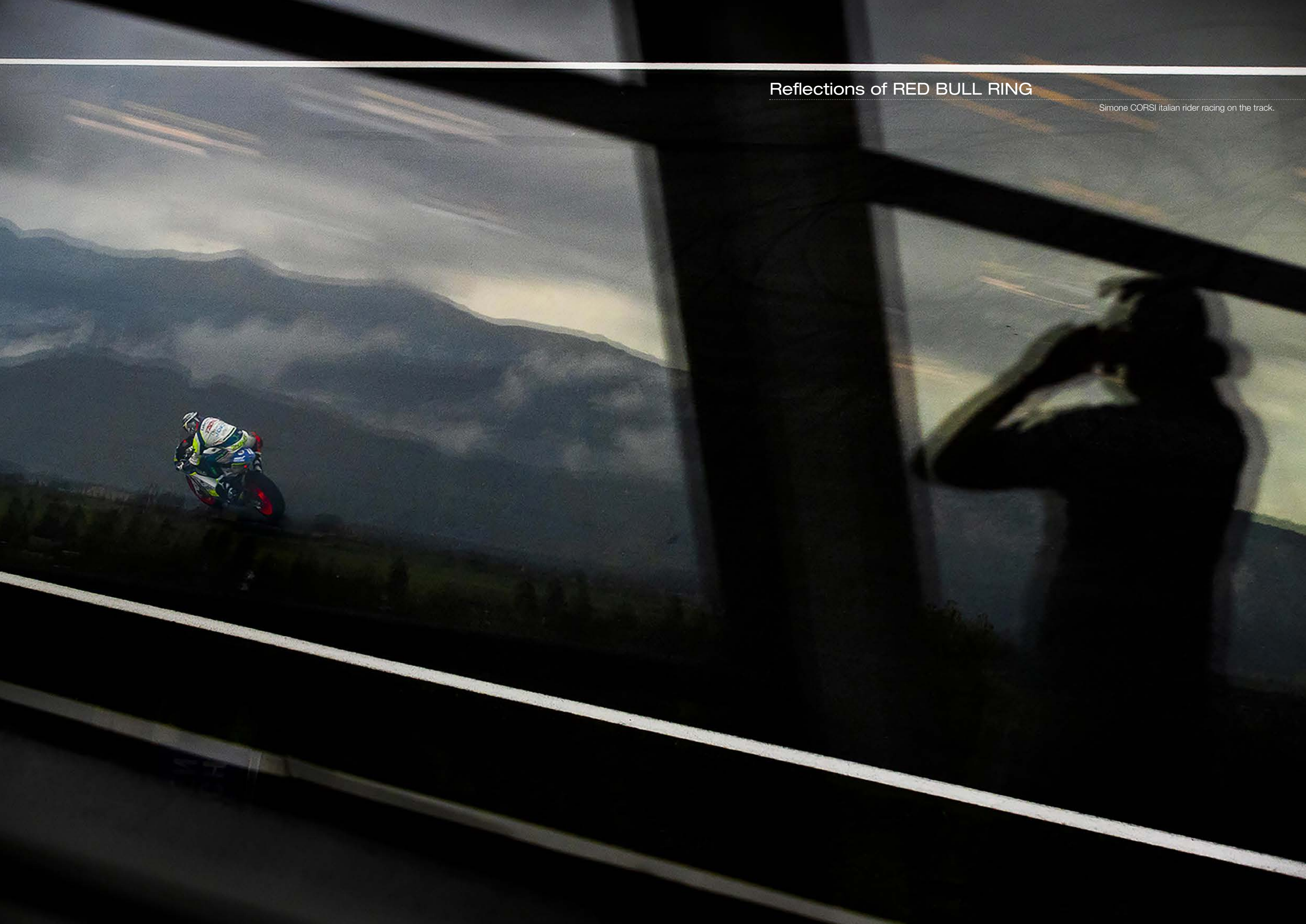
Unisex	XS	S	M	L	XL	2XL	3XL	4XL	5XL
--------	----	---	---	---	----	-----	-----	-----	-----

AVAILABLE COLORS

GFY	Grey / Fluorescent-yellow
GFO	Grey / Fluorescent-orange

Reflections of RED BULL RING

Simone CORSI italian rider racing on the track.



This image shows a full page of a document template. It consists of approximately 30 evenly spaced horizontal dotted lines across the entire width of the page, providing a guide for handwriting or typing. There are no margins, text, or other markings present.





MUGENRACE HEADQUARTER
H-1032 Budapest, Becs ut 170.
www.mugenrace.com
info@mugenrace.com
facebook.com/MugenRaceOfficial
instagram.com/MugenRaceOfficial